

20



24

ANNUAL  
COMMUNITY REPORT





## Dear Friends and Supporters,

In addition to the trails, mountains, lakes, and access to public lands, what really makes Whitefish special is its people. I believe our shared interest in the Whitefish Trail strengthens our community and continues to bring us together. The idea of the Whitefish Trail came from locals yet is for locals and visitors alike. The trails around Whitefish Lake provide something for everyone regardless of age, ability, politics, or socioeconomic status.

Today, the Whitefish Trail is part of our community fabric and offers a public space for people to connect with one another, engage in physical activity, and be involved in so many ways. Our community programs, school field trips, and kids' camps provide inspired learning in the best classroom—the outdoors! Our volunteer programs encourage people to work together and foster stewardship of our shared trail system and our local open lands. Our annual events are a chance to celebrate the trails

together and support our annual fundraising goals that maintain and improve those trails. In 2024, our programs, events, and volunteer efforts were great successes and proof that the Whitefish Trail is at its best when the community leans in and engages to make the trail a place for all.

Thank you to our supporters, partners, and collaborators for a great year. Get involved in 2025 by volunteering for the trail or a fundraising event or attending a community or education event. I promise you'll have fun, meet some interesting fellow trail users, learn a thing or two, plus make a difference in our community.

*Reid Sabin, Board Chair*

## MISSION

Whitefish Legacy Partners is a non-profit organization whose community-minded vision ensures conservation, recreation, and education on the lands around Whitefish for future generations. Our work includes conserving important viewsheds, watersheds, forests, and wildlife habitat on public and private lands through conservation agreements and acquisitions while simultaneously creating high quality recreation opportunities, including our cornerstone project, the Whitefish Trail.



### CONSERVATION

We protect our important local landscapes to ensure scenic viewsheds, connected wildlife corridors, open lands, and quality drinking water for generations to come.

Through innovative conservation strategies, our community-driven work protects lands while also supporting sustainable timber management, creating recreation opportunities and permanent public access, and ensuring MT School Trust Lands are not lost to development.



### RECREATION

The Whitefish Trail is a regional, multi-partner project established in 2010 to develop a 55+-mile recreational trail system encircling the community of Whitefish and Whitefish Lake. The natural-surface, non-motorized trail winds through vibrant forests, visits scenic lakes, and explores our protected open lands. Hiking, biking, fishing, or simply enjoying being outside with family, the Whitefish Trail provides permanent, public recreation just steps from town.



### EDUCATION

Education on the Whitefish Trail offers a unique opportunity to cultivate connections between our community, our natural lands, and our outdoor heritage. The WT Learning Pavilion at Lion Mountain offers a base for our year-round, free outdoor education programs. We strive to educate locals, visitors, and youth about the interwoven elements of a thriving ecosystem while fostering an appreciation for the special places surrounding our community.

## A NONPROFIT PROTECTING LOCAL LANDS





# CONSERVATION

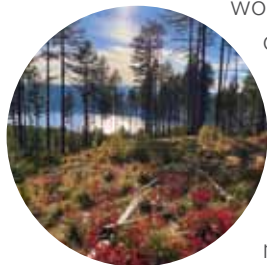
Over the past 20 years, collaborative community engagement, thoughtful decision-making, and generous philanthropic support have led to remarkable conservation achievements in our small town. Access to open lands and shared outdoor experiences have become increasingly vital to our health and well-being. However, evolving land management practices, population growth, and changing land use patterns may pose new challenges for conserving open spaces in and around Whitefish in the years ahead. Despite these challenges, Whitefish Legacy Partners remains optimistic and hopes that we can continue to access open lands and be outdoors together. These cherished spaces are more than just land—they are a legacy. Now, more than ever, continuing our tradition of conservation is essential.



## Community Conservation

If you were to ask ten people what conservation means to them, you'd likely get **ten different answers**. While all would probably reference protecting this place—its landscape, habitat, and wildlife—protection comes in many forms. For some it means open spaces protected for the benefit of wildlife and water quality. For others it includes public access, recreation, working farms, ranches, and healthy

working forests. There is no one right answer, and oftentimes conservation means finding the best solution for each special place. Most successful local conservation solutions include multiple uses such as forestry, agriculture, or recreation alongside habitat and watershed protection. Our projects work to honor Whitefish's history and values built upon the timber industry, outdoor recreation, local economy, and natural resource protection.

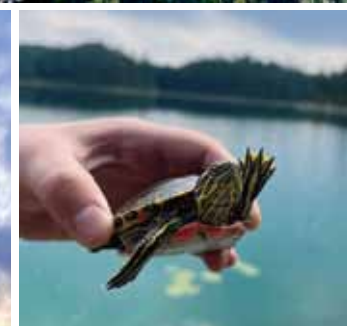


## Challenges

Whitefish is surrounded by a patchwork of private lands, national forest, and 13,000 acres of Montana School Trust Lands managed as forested land intended to generate revenue for the benefit of schools and universities statewide. These local public lands are at risk of development, and our conservation efforts to protect these lands are an ongoing challenge. Acting as the community conservation catalyst, we seek innovative solutions and create beneficial outcomes with both public and private landowners. Most importantly, our conservation efforts ensure a future with open spaces, clean water, and thriving ecosystems.



“ Sue and I feel the preservation of public and private lands at the head of Whitefish Lake are important assets to preserve for the community and future generations. As development accelerates and private property ownership expands in the Whitefish area, open lands are becoming increasingly scarce and in need of protection. We are so thankful for Whitefish Legacy Partners and the City of Whitefish's commitment to conservation.” - Rick Williams





A woman in a teal shirt and red shorts is running on a gravel trail through a dense forest. The sun is shining through the trees in the background, creating a warm glow. White fern illustrations are placed in the top right and bottom left corners of the image.

# RECREATION

How many times have you gone out with friends or family on the Whitefish Trail or just run into someone you haven't seen in a while? It seems like it happens every time for us, and it is one of our favorite things about the trail. In 2024, we focused on work that guarantees the trail continues to be a common space where we can gather and share meaningful experiences.



## Plan Your Adventure



The 47 miles of the WT provide everything from quiet and flat trails best suited to families to steep, rolling terrain that gets your heart beating. If you are new to the area or looking for a favorite spot, we have developed a tool to help you! Our Plan Your Adventure guide will help you explore your options and pick the trail section that is best for your activity of choice. The guide also informs users of any regulations or rules on different sections so you can “know before you go.” Follow this QR code to visit our website and plan your next Whitefish Trail adventure!



## Gathering on the Whitefish Trail

We invested in improved day-use at Holbrook Overlook and Smith Lake in 2022 and 2023 for users to gather and enjoy together. In 2024, we installed four new benches across the Whitefish

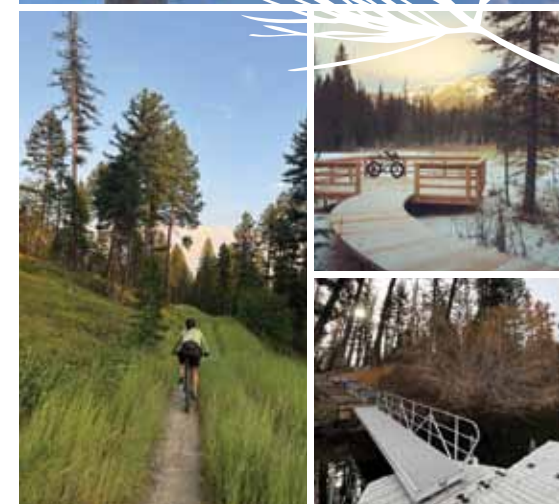


Trail system to create more places where users can rest and enjoy the moment with friends or by themselves. The new benches are at Skyles overlooking the surrounding cliff bands, along the Swift Creek loop, on the north shore of Woods Lake, and at Lion Mountain. Thank you to the families that donated to make these new benches possible. Each donated bench is a place where loved ones here and gone can be celebrated. There are still numerous locations that could one day have a bench for you or one of your loved ones.

## WHITEFISH TRAIL VOLUNTEERS OF THE YEAR: Heather and David Rennie

Every year, dedicated individuals volunteer their time and passion to the Whitefish Trail. This year, we are proud to highlight two individuals whose dedication and enthusiasm to the WT Trail Patrol, trail workdays, and Hootenanny have made a lasting impact.

“ We discovered the Whitefish Trail a few years ago and have greatly enjoyed the outdoor activities and experiences it offers. We have volunteered doing trail patrols to collect data and help others on the trails as well as doing trail work to fix and improve the trails. The Whitefish Trail has given us a lot of enjoyment, and volunteering for it has taken that appreciation to a deeper level. The good feeling we get from contributing to the community and helping to make the trail system something that everyone can enjoy is the reason we keep volunteering. - Heather & David Rennie



A close-up photograph of two children wearing hard hats. The child on the left, wearing a red hard hat, is holding a damselfly wing between their fingers. The child on the right, wearing a blue hard hat, is smiling. The background is a blurred outdoor setting with green foliage.

# EDUCATION

**1,304 PARTICIPANTS** IN 2024

**312** IN YOUTH PROGRAMS

**637** IN SCHOOL FIELD TRIPS

**355** IN ADULT PROGRAMS





Whoever you are, no matter how lonely, the world offers itself to your imagination, calls to you like the wild geese, harsh and exciting—over and over announcing your place in the family of things.

- Mary Oliver, "Wild Geese"

## Expanded Offerings

In 2024, we set out to ensure our outdoor education programs meet community needs by reviewing existing programs, obtaining public input, and developing new curriculum to launch in 2025. Data was also gathered from 2024 events, surveys, and a public information session. As a result, we are now actively making changes and additions to our programs including providing more girls' specific programs, expanding popular events, and implementing new school field trip curriculum.



## Sprouting Connections

The youngest members of the Flathead Valley are vital to long term protection of our local lands and community wellness. We are excited to announce the implementation of a robust curriculum for all school field trips that meets current accredited educational standards while maintaining a focus on place-based and experiential learning. Additionally, our Girls on the Trail legacy of mentorship and support of pre-teen and teen girls is expanding in 2025 to include a girls-only Bike and Swim camp.



## Place-based Community

**Mushroom hunts, stargazing parties, plein air painting, and more!**

Connecting with nature through new and unique experiences alongside likeminded individuals promotes community wellness and an appreciation of our local lands. Branch out and try something new—you might be surprised by how exciting experiencing the outdoors with fresh eyes can be!







# EVENTS

## CELEBRATE THE TRAIL THROUGH THE SEASONS

Three main Whitefish Trail fundraising events occur during the trail season that focus on celebrating and supporting our community trails and open lands.

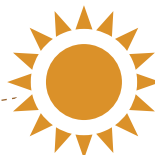


### SPRING

#### Hit the Trail Challenge



The annual Hit the Trail Challenge inspires our community to get outside and be active each May after a long winter. Participants log miles on the Whitefish Trail with each mile generating a donation from sponsors to support local conservation and the Whitefish Trail. In 2024, 28,595 miles were covered through hiking, biking, running, and horseback riding, thanks to hundreds of individuals, workplace teams, and Whitefish Middle School students. This challenge not only brings our community together for active living but celebrates our local lands and trail system.



### SUMMER

#### Whitefish Trail Hootenanny



Every August, the Whitefish Trail Hootenanny gathers the community for a night of live music, food trucks, and local craft beer to celebrate the trail and give back. 2025 is the 15th anniversary of the event! Expect an exciting live raffle that includes a ski season pass, mountain bike, local lodging and spa gift certificates and more. Bring the kids for family-friendly activities like a kids' bike obstacle course and art zone and a lively atmosphere. Every dollar raised goes to Whitefish Legacy Partners, the Whitefish Trail, and local conservation efforts.

For more information on upcoming events, visit [whitefishlegacy.org/events](https://www.whitefishlegacy.org/events).



### FALL

#### Whitefish Trail Blazer



The Whitefish Trail Blazer has evolved into a premier fall running event, celebrating the connections to our local lands. This event brings together more than 1,000 runners, spectators, and volunteers from the Flathead Valley and beyond. The weekend kicks off with the 50k Mountain Ultra, a challenging race that takes participants to the summit of Big Mountain via the Whitefish Trail in Haskill. On Sunday, the fun continues in Beaver Lakes where a variety of races cater to runners of all levels including a half marathon, 10k, 5k, and a family fun run. More than just a race, the Whitefish Trail Blazer is a weekend-long celebration where participants share in the joy of running and support of our local conservation lands.





## WHITEFISH TRAIL SPONSOR OF THE YEAR



Whitefish Credit Union is Montana's largest credit union and has been a dedicated supporter of Whitefish Legacy Partners and the Whitefish Trail since 2018. Since 2021, they have been a Legacy Sponsor of the Whitefish Trail, demonstrating a generous and long-term commitment to supporting the trail, local conservation lands, and our free outdoor education programs. As a not-for-profit cooperative, WCU is a full-service financial institution dedicated to meeting community needs through experience, service, and local philanthropy. They support the Whitefish Trail because it brings meaningful value to our community. Thank you, Whitefish Credit Union, for your dedication to preserving our local lands.

“

*Whitefish Credit Union is proud to support the Whitefish Trail because public spaces like these reflect the very best of our community—places where everyone can enjoy, explore, and connect with the outdoors. We believe that strengthening our connection to nature and one another is at the heart of the values we serve every day.*

*~ Jim Kenyon, President, Whitefish Credit Union*

To learn more about WLP's sponsorship opportunities and how you can give back to the community, visit:  
[www.whitefishlegacy.org/ways-to-donate](http://www.whitefishlegacy.org/ways-to-donate)



# FINANCIALS



## WHITEFISH LEGACY PARTNERS ANNUAL OPERATIONS & PROGRAMS

*Fiscal Year ending December 31, 2024*

Whitefish Legacy Partners' programs supporting conservation, recreation, education, fundraising, and community outreach are the backbone of the organization. Six dedicated, paid staff lead the efforts working to accomplish the community's vision with guidance and leadership from a 12-person volunteer Board of Directors.



### FISCAL SPONSORSHIP *Fiscal Year ending December 31, 2024*

#### Revenue

USFS Challenge Cost Share	\$32,600
Non-profit Partners	\$7,250
Corporate Sponsors	\$2,000
Trails Fest	\$934
<b>Total</b>	<b><u>\$42,784</u></b>

#### Expenses

Professional Services	\$18,981
Trails Fest	\$977
Administration	\$402
<b>Total</b>	<b><u>\$20,360</u></b>



## LEAVE YOUR LEGACY!

WLP established a qualified Montana accredited charitable endowment in 2011 with the Whitefish Community Foundation. The Fund safeguards the long-term health of our community trail system by funding maintenance in perpetuity for current and future generations. The Montana Endowment Tax Credit (METC) allows donors to pay less in Montana state income taxes when they give a planned gift to a qualified Montana charitable endowment like ours. Your gift will grow over a 5-year period and forever benefit the Whitefish Trail.

[www.whitefishlegacy.org/ways-to-donate](http://www.whitefishlegacy.org/ways-to-donate)

### ENDOWMENT BALANCE:

**\$1,472,063**

*as of December 31, 2024*

### ANNUAL DISTRIBUTION:

**5% IN PERPETUITY**

#### Revenue

Grants	\$16,000
Corporate Sponsors	\$66,939
Contributions:	
Friends & Families	\$43,433
Major Donors	\$173,353
Events & Merchandise	\$114,595
Education Programs	\$18,722
Investments:	
Prior Year Programs	\$59,998
Prior Year Great Fish Community Challenge	\$120,728
<b>Total</b>	<b><u>\$613,767</u></b>

#### Expenses

Operations:	
Conservation Programs	\$98,347
Education Programs	\$104,056
Recreation Programs	\$150,000
Professional Services	\$61,909
Fundraising	\$71,668
Community Outreach	\$82,574
Administration	\$22,606
Future Investments-2024 Programs	\$22,230
<b>Total</b>	<b><u>\$613,390</u></b>

#### In-Kind Support

Volunteer Labor	\$21,275
Goods & Services	\$41,231
<b>Total</b>	<b><u>\$62,506</u></b>



# THE WHITEFISH TRAIL

## ANNUAL PROJECT

Fiscal Year ending December 31, 2024

WLP fundraises each year to support new construction and operations and maintenance on the Whitefish Trail.

### NEW CONSTRUCTION Smith Lake & Murray Lake

<b>Revenue</b>	
Grants	\$8,424
Private Donations	\$14,230
<b>Total</b>	<b>\$22,654</b>

<b>Expenses</b>	
Planning & Design	\$19,230
Smith Lake dock	\$3,424
<b>Total</b>	<b>\$22,654</b>

### OPERATIONS & MAINTENANCE

<b>Revenue</b>	
Grants	\$52,884
Partner Contributions:	
Glacier Nordic Club - Big Mtn. Trailhead	\$2,740
Flathead Area Mtn. Bikers - Spencer Mtn.	\$10,059
USFS FNF - Holbrook Overlook	\$9,952
Endowment Distribution	\$90,503
<b>Total</b>	<b>\$166,138</b>

<b>Expenses</b>	
Operations	\$30,338
Maintenance	\$135,465
<b>Total</b>	<b>\$165,803</b>

Annual WT budget is managed collaboratively with the City of Whitefish, Parks & Recreation

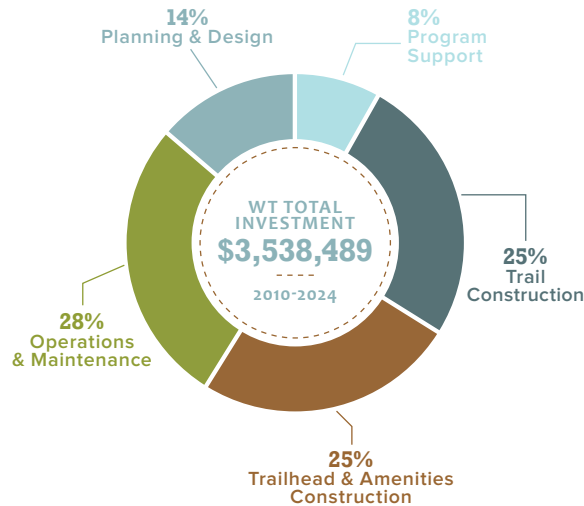
### IN-KIND SUPPORT

Whitefish Legacy Partners	\$61,909
City of Whitefish, Parks & Recreation	\$6,320
Volunteer Labor	\$38,975
Flathead Area Mountain Bikers	\$1,242
Professional Services & Contractors	\$12,558
<b>Total</b>	<b>\$121,004</b>

## TOTAL PROJECT

2010-2024

The Whitefish Trail first opened in 2010 at Lion Mountain with new sections of the Whitefish Trail added each year. The original WT investment was led by community-minded donors and leveraged by WLP to secure Montana's largest Recreational Trails Program grant supporting a project of regional significance. Thirteen years later, with annual contributions thanks to the generosity of trail users, conservation-minded supporters, and local businesses, the Whitefish Trail is 47-miles, accessed from 15 trailheads, with education programs based at the WT Learning Pavilion at Lion Mountain.



## FUTURE PROJECTS

2025-2035

WLP invests in the future of the Whitefish Trail strategically and with prudent fiscal responsibility. Ongoing operations and maintenance relies on donors, grants secured by WLP, the Whitefish Trail Endowment Fund, and starting in 2025, the City Resort Tax. New construction projects also rely on support from donors and grants secured year after year.

Upcoming and future WT projects include connecting Rainbow Lake to Murray Lake, connecting Holbrook Overlook to Hellroaring Basin, expanding trails at Smith Lake, connecting Hellroaring Basin to Smith Lake, and finally crossing the BNSF railroad and connecting Swift Creek to North Beaver. We are working to add new sections each year to ultimately Close the Loop on the Whitefish Trail.

### NEW CONSTRUCTION

Private Donor Reserves - Close the Loop	\$106,206
Private Donor Reserves - unrestricted	\$64,544
Grants - secured - 2024-2027	\$208,500
<b>Total</b>	<b>\$379,250</b>

### OPERATIONS & MAINTENANCE

Private Donor Reserves - restricted	\$76,537
Grants - secured - 2025-2026	\$45,000
<b>Total</b>	<b>\$121,537</b>
WT Endowment Fund	\$59,500
City Resort Tax - projected	\$119,000
<b>Total - recurring annually</b>	<b>\$178,500</b>

## COMMUNITY CONSERVATION

WLP acts as the local community catalyst to create beneficial outcomes and protect critical landscapes for the community. WLP's community-driven conservation projects remove development rights, protect open space and public access in perpetuity, and create high-quality recreation opportunities. In 2014, we protected 1,520 acres in Beaver Lakes forever. In 2016, 3,022 acres and the city's drinking water were protected in Haskill Basin. In 2025, our goal is to protect 615 acres of Montana State Trust Lands at Smith Lake and Swift Creek.

**BEAVER LAKES** **HASKILL BASIN**

**\$7.3M** + **\$16.7M** = **\$24M** + **FUTURE CONSERVATION**

100% funded locally      46% or \$7.7M funded locally      2012-2016



## SMITH LAKE LEGACY

Private Donations—2016-2023	\$3,129,080
Private Donations—2024	\$456,034
Foundations—2024	\$313,000
Private Donations—pledged 2024	\$760,000
Private Donations—pledged 2025-2027	\$414,885
<b>Total</b>	<b>\$5,072,999</b>





# SUPPORT

Thank you for supporting conservation,  
education, and recreation in our community!

## 2024 TOTALS

TOTAL RAISED  
**\$201,779**

TOTAL  
DONATIONS  
**473**

NEW  
DONORS  
**85**



**Lin & Kathy Akey**  
Amgen  
Anonymous  
**Tom & Louise Bannigan**  
Michael Barone  
**Duane & Valerie Bauch**  
Marvin & Susan Bernt  
**Dee Blank**  
Tom & Carrie Bowman  
**Dick & Sandy Boyce**  
Alex & Terri Boyer  
Bristol-Meyers Squibb Foundation  
**Broussard Charitable Foundation**  
**Bill Carpenter**  
**Rich & Nancy Castor**  
**John Chaney**  
**Marge & Ed Chianelli**  
Don & Sally Clark  
Alicia Coghlan  
Michael & Stacy Covey  
**Gordon & Katherine Cross**  
**Lindy Cubberley**  
**Gary & Annell Danczyk**  
John & Patsy Davis  
**Tom & Cindy Downing**  
Randy & Louise Dunlop  
**Kate & Ross Dworman**  
**Melanie & Trenton Eckhardt**  
Dixie Eppink  
Lori Faison  
Donald Feldman & Karen Burke  
Irene Feria & Jose Ness  
Laurie & Patrick Fitzgerald  
**Margaret Forster**  
Hillary & Keenan Gallagher  
**Carlos Garcia**  
**& Tara Smith-Garcia**  
Madison Grady  
**David Grady & Linda Engh-Grady**  
**Brandon & Colleen Guest**  
**Charlene & Mike Gustafson**  
**Jan Haller**  
**Mike & Jennie Henson**  
Arden Hoffman  
**Noel Huettich**

Luke Johnson  
Mike Jostrom  
**Kalpakis Family**  
Carie Kelleher  
Bradley & Melissa Kent  
**Philip & Lisa Kepler**  
Doug & Carolyn Kohrs  
**Brian & Deborah Krueger**  
**John & Dana Lacey**  
Stephen & Kerrilyn Latter  
Julie Lyon  
Tim & Kathy McAughan  
**Molly Miller**  
**& Mark Jungerman**  
**Karl & Carol Moody**  
Lynn & Anders Myhran  
**Alexander & Abi Nutt**  
Jules Olson  
**Marcia & William Pade**  
Sandra Perl  
Maurie Povich & Connie Chung  
James A. Reep Foundation  
**Hank & Susan Ricklefs**  
**Sue Robison**  
**David & Stephanie Rohrer**  
**Ernest Rouse**  
**Stacy Rudnicki**  
Tim & Deborah Salt  
Callie Schieffer  
**Toby Scott**  
Erin Shoemaker  
Stacy & Ashley Smith  
**Preston & Marjorie Spencer**  
The Stallings Family  
**Dennis & Shane Steger**  
**Charlie & Nancy Stone**  
**Stanley & Jeanne Strathman**  
Tailwinds Foundation  
**Nancy & Jesse Thompson**  
Margaret Ann Timmons  
Carolyn Tobkin & Craig Battin  
Daniel Tonkovich  
**Scott Tucker**  
Garrett & Priscilla Turner  
Alberto & Stacey Valner  
**Christine Walker**  
Robert A Waller Foundation  
**Ben & Katie Ward**  
**Laura Whittemore**  
Heggie & Julie Wilson  
**Doug & Bet B. Wise**  
James & Gilda York



**Rob & Kim Akey**  
Danielle Algeo  
Tom Anderson  
Anonymous  
Karen Bates  
**Duane & Valerie Bauch**  
Randall & Anita Beach  
Steffen & Kristine Beach  
John Bertram  
**James & Virginia Bowland**  
**John & Brenda Dulski**  
**Melanie & Trenton Eckhardt**  
Kevin Eichhorn  
Paul & Courtney Feldt  
David & Abby Fitch  
**Kristin & Bryan Gardner**  
**Eric & Kari Greenberg**  
Jud & Lee Ann Groshong  
**Greg & Catherine Gunderson**  
**Kaye & Bruce Haller**  
Catherine Hetrick  
Chris & Shannon Hoge  
Chad & Lindsay Hudson  
**Leslie & Will Hunt**  
**Wayne & Yolande Johansen**  
Zach Jonson  
KLA Foundation  
**Bill & Jill Kobrin**  
Rebecca Kyle Real Estate  
**Frank & Ginny Larence**  
Joe Laszewski  
John & Kathleen Lewisohn  
Bill & Kristi Jo Lynn  
**Thomas & Christina McClure**  
Curt & Sherry McIntyre  
Jean Morgan  
**Anna Maria Motta**  
**Rick & Laurie Murphy**  
**Sam & Ruth Neff**  
**Dan & Deana Nelson**  
Terri Odenweller  
Ryan Pannell  
Julie & Eric Pastor  
**Deborah Pero**  
**Carole Peschel**

**Annie Pontrelli**  
**David & Stephanie Rohrer**  
Lee Rumaner  
**Tom & Jen Sato**  
Roger & Carole Spragg  
**Richard Steed**  
**Eric & Stephanie Taylor**  
Kiersten Todd  
Eric & Stephanie Toler  
**Heidi & Mark Van Everen**  
Varian Medical Systems  
Vibrant Roots  
Aimee Weller  
**Mary & Hal Williamson**



**Koel & Lazette Abell**  
Ryan Abramson  
Doug Adams  
**Scott & Jennifer Alexander**  
Kristin Almquist  
**Jeff Anderson & Karen Nicoletti**  
Anonymous  
Rebecca Ashcraft  
Chuck Aude  
**Bake & Lee Baker**  
Michelle Baringer  
**Steve Barrett**  
Ellen Barta  
Kylee Bass  
Kristin Bell  
**Diane & Herb Bingham**  
Aimee Blinder  
Terese Boeder  
Cheryl Bracht  
John & Jenny Branstorn  
Ron Brawer  
Elizabeth Bridges  
Chris Briner  
**Tom & Debbi Browning**  
**Larry & Molly Bruce**  
Michael Buesseler  
Richard & Laura Burbine  
Alayna Byrum  
Lauren Calhoun  
Charles & Sandra Campbell

Claire Cantalup  
**Brian & Brenda Carper**  
Rachel Cassidy  
**Timothy Clayton**  
**Kathy Colucci**  
Compass Lexicon  
**Paul Conrad & Ellie Johnson**  
Deidre Cook  
Nancy Cronin  
**Chris Crumal & Vicki Bernstein**  
**Rod DeVall**  
Doug & Stacy Dolan  
**Nell Doyle**  
Ned Dunn  
**Marilyn & Ed Eberly**  
Kim Eickman  
Elite-Trips.com  
Levi Elsberry  
Renee Erickson  
Dave & Terry Evans  
Lynn Exton  
Eman & John Federico  
Kora Felsch  
Suzanne Forristall  
**Dan Frankino**  
Scott Freeman  
Angie Friedner  
Joe Froehle  
Eric & Debbie Funk  
**Grete Gansauer & Zach Miller**  
**Bob & Melissa Genovese**  
Thomas Gilfillan  
**Wanda Good**  
**Frank & Jodi Gray**  
Gregory Griffin  
Dianne & Larry Grove  
**Karen Gunderson**  
**John & Julie Hankinson**  
Chuck & Debby Hartle  
**Lynn Hartshorne**  
David & Gail Hazen  
Nancy Henriksson  
Karl & Carmen Henshaw  
Kristie Hepburn  
Cristi Herren & Chas Dense  
Chris Holdhusen  
Grace Holm  
Junay Hom  
**Birgit Huffman**  
Jay Hunston  
Sonya Hymas  
IBM

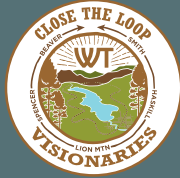
**Jerry & Marsha Ingraham**  
Brady Johnson  
Claudine & Scott Johnson  
Sheila & Jay Johnston  
Christopher Jones  
Sabra & Kent Jones  
Kristin Kallal  
Cory Keller  
Dee Kelley  
**Steven & Melissa Kelly**  
Susan Kemp  
Roger King  
Jeff Kirkhuff  
Victoria Knoll  
Mary & Rick Kratz  
Abigail Kruppstadt  
Sharon Kyle  
Mitch Lee  
Lisa & Ron Lenoch  
Jeff & Della Littfin  
Lynzey MacRae  
**Patrick Madigan**  
**Marianne Madler**  
Christina Maloney  
**John & Anne Maloney**  
Peter & Lisa Marshall  
Ryan Massey  
Shelli Mavor  
Jered McCafferty  
Mary McCarthy  
Kathryn McKay  
Christine McKenney  
**Kathleen McMahon**  
Brittney Mello  
**Larry & Ruth Menter**  
Chris Merriman  
**Paul Miller & Joana Valentino**  
**Theresa Mooney**  
Ernest Moore & Mo Cleary  
**Jeanine Morreim**  
**Michael & Wanda Morton**  
Bob & Terri Muraoka  
Tim & Joyce Murphy  
**Barbara Myers**  
Bret Neely  
Link Neimark  
Rolf Olsoy  
Ryan Pannell  
Patrick Paradis  
Richard Park  
Valerie Park  
**Jean Parodi**

Kim Pearce  
**Lori Penzi**  
Barb Pfannkuch  
Steven Phillips  
Clayton Phillips-Dorsett  
Andrew Porter  
**Lori Rauser**  
**Dan & Sharon Roat**  
Tonya Rolando  
**Leo & Amy Rosenthal**  
Richard Rounds  
Hudson Ruiz  
Shawna Sanders  
Austin Saucier  
Kelly Scarponi  
**Andrea & Erik Schroeder**  
**Patti Scruggs & John Crouch**  
Sheila Shapiro  
Julie Shea  
Michelle Sinclair  
Lynzee Solaimanian  
**Joan Sorensen**  
Kristen Sramek & Josh Lozman  
Sally Stecher  
Harlan Steele  
**Sarah & Anthony Stewart**  
**David Streeter**  
Rick Sullivan  
**Ann Swanson**  
Amy Taylor  
Genevieve Thomas  
Thompson Real Estate & Build  
Somer Treat  
**Rick & Jan Ulvin**  
Kristin Van Everen  
**Joel Vignere**  
Shaun Wasyljen  
**Daniel White**  
Wiggly Grizzly LLC  
Sierra Winch  
Mark Wrapp  
**Charles & Shaya Zucker**

*Bold print indicates  
supporters who have given  
every year for 5 years.*

Every effort is made to correctly list and thank each supporter who allows us to make a public acknowledgement of their gifts to Whitefish Legacy Partners. If your name is missing or incorrect, we apologize for our error. Please contact us with corrections at (406) 862-3880 or email us at [info@whitefishlegacy.org](mailto:info@whitefishlegacy.org).





#### AGL Foundation

Carol & Richard Atkinson  
Summerfield & Julie Baldrige  
Bill & Betsy Bayne

Broussard Charitable Foundation

Dick & Sandy Boyce

Craig & Nancy Branigan

Mark & Kirstin Buckland

Wesley Campbell

Castor Family

Cinnabar Foundation

Cross Charitable Foundation

CSX Foundation

Kate & Ross Dorman

Michael & Michelle Episcopo

Paul & Wendy Faganel

Flathead Community Foundation

James J & Joan A Gardner Family Foundation

Hall-Halliburton Foundation

High Stakes Foundation

Mark Jungerman & Molly Miller

Kiita Foundation - Jim & Jo-Ann Armstrong

Krummholz Fund - Joe & Cindy Gregory

The Hallowell Foundation

Molly & Tobin Hoppes

Tyler & Jessica Hoppes

Mike & Lindsey Hromadka

Melissa Hulvat & Pierre Kapitanian

Paul & Ann Jeremiasson

Darrell & Allison Jones

Fred & Sarah Jones

Kenlou Foundation

Doug & Carolyn Kohrs

Josh Lozman & Kristen Sramek

Macor Family

Mark & Ashleigh Magill

Paul & Janice McCann

Shane McMillen & Sarah Canepa

John & Alison Means

Matt & Ellen Moran

Marcia Pade

Than & Kristen Pulsifer

Tom & Teresa Quinn

Judy Ross & Jay Lanning

Raven Foundation

Hank & Sue Ricklefs

George & Kimberly Ruhana

Schlenger Family Foundation

Jon & Misty Scurlock

Dennis & Shane Steger

Al & Lisa Stinson

Garrett & Priscilla Turner

James & Toni Turner

Steven & Ardy Whisler

Whitefish Community Foundation -

Great Fish Community Challenge

WCF Linda Engh-Grady Award for Nonprofit Excellence

Rick & Sue Williams

Randall & Kristin Zuckerman

*Bold print indicates supporters who have given every year for 5 or more years.*



Katelyn Dyson

Goguen Family

Charlie & Teresa Grenier

Richard & Suzanne Hildner

Kramer Family Fund

Leonard & Carol Lewensohn

Marina Tots Preschool

Katherine & David Mayer

Rhona & Jerry Meislik

John Muhlfeld

Debbie & Tom Rivard

Erik & Andrea Schroeder

Robert & Margaret Stevens

Stephanie Sunshine

Ann Swanson

Karen Van Howe

Whitefish Legacy Partners

*Bold print indicates those who have given multiple gifts to the WT Endowment.*

#### IN MEMORY OF:

Britt Barone

Katy Branstion

Sandra Conradi

David Dixon

Tyler Ellison

Shane Foster

Donald & Margaret Forster

James Garbacz

Laurel Grady

Eric Hosek

James Howe

Marlyn James

Barbara Janni

Ethan Johnson

Kylie Kobrin

Hank Mayfield

Jerry Meislik

Erik Myhran

Lillian Nelson

Rob O'Neil

Ben Parsons

Sam Penzi

Kent Rauser

Janey Rouse

Peter Stanley

Lynn Turpack

*Bold print indicates those who have trailhead or on trail recognition.*



Peggy & Kris Caister

## PLANNED GIVING

As part of your estate planning, you can leave a legacy for what you hold dear and name Whitefish Legacy Partners as a beneficiary of your estate. We are honored to continue to promote community conservation, public recreation and free education on the Whitefish Trail in your memory.



When my wife and I were in our 20s we lived in Whitefish and spent a lot of time on all the trails.

I had a GPS and was studying to become a land surveyor at FVCC. While following my running passion, I began mapping trails as I ran and trying to figure out how to connect the various areas (Spencer, Beaver, Haskill, etc.). One of my final projects at FVCC was a compilation of those trails that I called the "Whitefish Recreation Corridor." Not long afterwards, I learned about a project to connect the trails around Whitefish called the "Trail Runs Through It." I shared all my data and the rest, as they say, is history. Fast forward 20 years or so, and my wife and I decided it was time we had a will. Although, we don't have much to give in terms of present-day donations, my will directs a future gift be made to Whitefish Trail so more people can create their own lasting memories. I've never forgotten my time on those trails, and I have always loved how trails connect communities large and small, near and far, human and habitat.

~ Kris Caister

Kris served on the Whitefish Trail Master Plan Committee, 2004-2006. He and his wife Peggy currently reside in Virginia.





# Whitefish Community Foundation

## GREAT FiSH community challenge

## 2024 TOTALS

WLP RAISED  
**\$174,806**

WCF MATCH  
**\$14,500**

INCENTIVE  
GRANTS  
**\$13,000**

DONORS:  
**550**  
INCLUDING  
**123**  
NEW!

Kevin & Christine Abel  
Koel & Lazette Abell  
David & Ruth Ackroyd  
William & Olga Adams  
**AGI Foundation**  
**Lin & Kathy Akey**  
**Elise & Stefan Anderes**  
Johnathan & Shani Anderson  
Zak & Aaron Anderson  
Katie & Paul Anderson  
Chip & Kate Andrews  
Angora Ridge Foundation  
Anonymous  
Andy & Holly Apple  
Shelly Arbuckle  
**Carrie & Jim Archibald**  
**David Archibald**  
David Arnett  
Andy Arnold  
Bruce & Joni Aronson  
**Gerald Askevold**  
Michael & Kathleen Bailey  
Shelby Baldrige  
**Summerfield**  
**& Julie Baldrige**  
Mike & Virginia Baldwin  
Bank of America  
Charitable Foundation  
**Tom & Louise Bannigan**  
Roger Barber  
& Mary VanBuskirk  
**Mike & Kristi Barham**  
Frank & Naomi Barnes  
**Roger & Beth Barth**  
Rick & Trish Bartoskewitz  
**Bill & Betsy Bayne**  
Randall & Anita Beach  
**Mary & Ronald Behrendt**  
Behron LLC  
Amanda Belleville  
& Brady Lockhart  
**Carla Belski**  
Jennie Bender & James Pyke  
Carol Bibler & Jim Watson  
**Jack & Nancy Biddle**  
Robert Biddle  
**Ibrahim & Martha Bisharat**  
**Robert & JoBeth Blair**  
Ed Blair & Kelly Ingham  
**Cameron Blake & Sandy Gray**  
Sam Boardman & Jess Cerra

Dane & Melanie Boat  
**Noah & Erin Bodman**  
Deb Bond & Charles Webster  
Tracey Bowlby  
Steve & Molly Box  
Katie Boyd  
Ron Brandt  
**Scott & Barb Brant**  
**Becky & Doug Briber**  
**Matt & Tara Brister**  
Julie Brown  
Tara Brown  
**John & Madison Browning**  
**Ron & Jan Brunk**  
**Mark & Kirstin Buckland**  
Bulldog Saloon & Grill  
Burns Family  
**Paul Burton**  
Sara & Ryan Busse  
**Jean & Peter Butcher**  
Cynthia Butler  
Geoff & Lisa Calaway  
Justin & Arnie Callaway  
Jamie & Christine Carbo  
Daniel Carlisle  
Jeff Carlson  
& Cheri DuBeau Carlson  
Laura Carlson  
**Sue & Jim Carstens**  
Maureen Casey  
**Helen & Larry Cates**  
Causey Family  
Megan Chaisson  
Emilie Chaplow  
**Linda Chauner**  
Kimberley Christensen Wilde  
Timothy & Glenda Christenson  
Anne Clauss  
**Gail Cleveland**  
**& Bruce Tannehill**  
Chris Clouse & Ed Moffatt  
**Catherine Cloutier**  
**Kim & Patti Codiga**  
**Connie Cohen**  
Ann & Andrew Cole  
Taylor Colvert  
Genevieve Conradi  
Karen Conradi  
Sandra Conradi  
**Diane Conradi & Steve Braun**  
Elaine Conradi Eustis

Steph Cook  
Chad & Rebecca Corah  
**Kevin Corbett**  
**Karen Cordi**  
**Tim & Deidre Corson**  
Joe & Jill Courtney  
Mary Lou Covey  
**Mark & Constance Cowett**  
**Betsy & Woody Cox**  
**Wendy Coyne**  
**Karl & Kathy Cozad**  
Scott Crandell & Deb Steig  
Kim Crawford  
Nancy Cronin  
John Cronly  
Jen & Jerry Croskrey  
Sara Cullinane  
**Carol Cunningham**  
& Thomas Feller  
Katherine Curtis  
Lori & Walt Curtis  
**Mary Curtis & Mark Davis**  
Tanner Dahlman  
**Lesley & Cliff Dales**  
**Gary & Annell Danczyk**  
Scott Davidson  
**Alan & Frances Davis**  
**Jimmy & Michaelan**  
**DeHerrera**  
Isaac Deschenes  
Meg & Chap Godsey  
Taylor Deschenes  
Michael Deubel  
& Joan Ehrenberg  
**Dave & Frances Dittman**  
**Mark & Lynnette Donaldson**  
Tama & Dan Donovan  
**Rick & Kristy Dooling**  
**Nell Doyle**  
Josh & Ginger Duchesne  
Ned Dunn  
**Bernadette Duperron**  
& Shawn Watts  
**Jen & David Elden**  
Lauren & Brittan Ellingson  
**Pat & Susan Ellis**  
**Bart & Carole Erickson**  
David & Sarah Ericson  
**Sally Ericsson & Tom Garwin**  
Elizabeth Estopinal  
Thomas Eustis  
William Eustis

**John & Marianne Evenhuis**  
Dan & Ann Fagre  
**Scott & Phyllis Fair**  
Feeley Family  
**John Feldt**  
Paul & Courtney Feldt  
Greg & Sandy Ferrian  
Andy & Terry Feunry  
CJ & Mark Finnial  
**First Interstate**  
**BancSystem Foundation**  
Donald & Joann Fleming  
**Peter Francisco**  
**Brandon & Katie French**  
**Hal Frutiger**  
& Debbie Rossetto  
John Gangemi & Robin Bissell  
Rod & Wanda Garcia  
Lindsey & Keith Gardner  
**Glenda & Richard Gehri**  
Isabelle Geneve  
Karen Gentry  
**Judah & Tanya Gersh**  
Heidi Gillenwater  
Kim Givler  
Emma Gjullin  
**Glacier Bank**  
**Glacier Cyclery & Nordic**  
Glacier Guides & MontanaRAFT  
Meg & Chap Godsey  
Peter Goedecke  
**Chris & Susie Gonaver**  
**Wanda Good**  
David Gordon  
**Richard Gordon**  
& Cheryl Watkins  
**David Grady**  
& Linda Engh-Grady  
Elizabeth Graham  
John & Sarah Graves  
**Frank & Jodi Gray**  
**Mary Taylor Greenup**  
**Alan Gregory**  
**Joe & Cindy Gregory**  
**Ryan & Beth Gunlikson**  
Jennifer Hintz Guse  
**Charlene & Mike Gustafson**  
H&R Block  
**Jan Haller**  
**Kaye & Bruce Haller**  
**Hannigan Family**

Otto Hansen  
**Tom & Sue Harding**  
Nichole Harris  
**Kristen Harrison**  
Sam Hartwell  
**Brian & Shannon Haycox**  
Jared & M'Liss Heimbigner  
**Maureen & Michael Hein**  
Katie & Frank Hertz  
**Richard & Suzanne Hildner**  
Roderick Hines  
**Russ & Linda Hobbs**  
Stella & Willie Hobbs  
Molly & Bill Hobgood  
Jane & Paul Holland  
**Holt Family**  
**Kendra Hope & Paul Sheehan**  
Molly & Tobin Hoppes  
**Tyler & Jessica Hoppes**  
**Dusty Hosek**  
**Trevor & Kacy Howard**  
**Marisa & Matthew Hoynes**  
**Mike & Lindsey Hromadka**  
Livia Hughes  
**David & Linda Hunt**  
**Leslie & Will Hunt**  
**Martha Hunt & Jim Finneran**  
Lori Hurst  
**Barb & Ron Hvizdak**  
Chris & Jennifer Hyatt  
**Gary & Jill Hyer**  
IBEX Property Management  
**Ila B. Dousman Fund**  
Franz & Cynthia Ingelfinger  
Ingredion Charitable  
Foundation  
Michele Irelan  
Travis Jackson  
Margosia Jaskowski  
**Charles James**  
**Paul & Ann Jeremiassen**  
**Claudine & Scott Johnson**  
Dale Johnson  
**Dr. Jon & Diane Johnson**  
Jody & Chuck Johnson  
**Fred & Sarah Jones**  
**Jeffrey Jones**  
Sherry Jones & Jim Rogers  
**Mike Joepk & Pam Gerwe**  
Bob Jordan  
Adam Juhasz

**John & Lisa Kalbfleisch**  
Matt Kalgren  
**Greg & Connie Kasper**  
**Steven & Melissa Kelly**  
Jill Kelsall  
Holly & Craig Kemp  
Matt Kennedy  
Lorne & Leslie Kermath  
Lauren King  
Richard Kinonen  
Paula Koch & Matt Ford  
**Betsy & Daniel Kohnstamm**  
**Jane Kollmeyer & Terry Chute**  
**John Kramer**  
Katy & Joseph Krezowski  
Norm & Mary Kuennen  
Tanner & Stephanie Kuhl  
**Ross & Miranda Kulzer**  
**Jesse & Jon Kuntz**  
**John & Dana Lacey**  
Lam Research  
Megan Lamb  
**Paul & Yvonne Lamb**  
Last Best Ride LLC  
**Last Chair Kitchen & Bar**  
**Brian Lavergne**  
& Christine Tateson  
Michael & Linda Lebeau  
Kyle Lefler  
**Natalie & Josh Lenderman**  
Erica & Todd Lengacher  
Gail Leonard & Leo Kean  
Georgia Lichty  
**Bruce Lieffring**  
& Brenda Winkler  
**Sue & Ed Lieser**  
Donna Liffers  
Justin & Moira Linam  
Hilary Lindh  
**Marcia Litchfield**  
**William & Cathy Love**  
**Neil & Judy Lovering**  
Ruth & Bret Luedke  
Duncan & Deb Lutes  
Hikmat Maaliki  
Luke MacCormick  
Rob & Allison MacCormick  
Sarah MacCormick  
**Mark & Ashleigh Magill**  
Keith & Freda Malazdrewicz  
Eric Malzone

Carol & Jim Marino  
Robert & Samara Marney  
**David Marx**  
Angus Matheson  
Amy & Eric May  
Joanne McArthur  
**Babby McCartney**  
**Abe & Shelley McCoy**  
**Kathleen McMahon**  
Renee & Mike McNulty  
Mike Meador  
**Rhona Meislik**  
Manuel & Emily Mendoza  
**Richard Menicke**  
& Jen Asebrook  
**Jan & Pete Metzmaker**  
**Mary Anne Miles**  
Jean & Ron Miller  
**Laurie & Martin Miller**  
**Necile Miller**  
**Molly Miller**  
& Mark Jungerman  
Amanda Minatra  
Mindful Designs  
**Gaylen & Susan Moll**  
Matt & Ellen Moran  
Mary Beth Morand  
**Devvi Morgan**  
Christine Moss  
Clint & Amy Muhlfeld  
**Patrick Muri**  
**Roberta Myers & Larry Davis**  
Lech Naumovich & Drea Beale  
**Sam & Ruth Neff**  
Matt & Emma Nerdig  
Kim Nickell  
David Nickelson  
Donald Nisewanger  
Ed & Sherri Nissen  
**George & Kristen Nix**  
Robert & Elizabeth Norheim  
Bill & Laurie O'Leary  
**Christy O'Neil**  
**Marcia O'Neil**  
**Eric & Anne Oehlerich**  
Tom Olcott  
Old Montana Building Company  
Barbara Olsen  
Gregory & Cynthia Olson  
**John Opatz**  
& Laurie Hedger-Opatz

**Jessie Opel**  
Tom Osen & Patti Johnston  
Heather Overstake  
Rachel Parker  
**Margaret Parodi**  
**Alyssa & Andrew Parsons**  
Larry & Valerie Parsons  
**Drew Paslawsky & Kim Sands**  
Sheena Pate  
Bryan & Danielle Pearce  
Joel Pemberton  
**Megan Pepe & Joel Welle**  
**Carl & Kelsey Perkins**  
**Karen Perser & Sydney Lillard**  
Nancy Persons  
Laura Peschel  
**Regan Peschel**  
John & Melissa Phelps  
**Doug & Carolyn Pitman**  
Sara Poinier  
Nick Polumbus  
**Dow Powell**  
& Becky Smith-Powell  
& Jedd Sankar-Gorton  
Brooks & Lila Preston  
Greg Priest  
Colleen Purwins  
**Tom & Teresa Quinn**  
Thomas Rainey  
**Joe & Beverly Raudabaugh**  
Tighe & Jennifer Reardon  
**Redfield-Zlogar Family**  
**Vicki Reich**  
Heather & David Rennie  
**John Repke**  
Doug Rhodes  
& Marie Le Moyne  
Amelia Rieser  
Suzy Riley-Elliott  
Cassie Roberts  
Mitchell & Jennifer Robinson  
**Sue Robison**  
**David & Stephanie Rohrer**  
Sue Root  
Tom Ross  
Judy Ross & Jay Lanning  
**Roger Rowles**  
& Valerie Konnerup  
**Stacy Rudnicki MD**  
Chris Runyon

*Bold print indicates supporters who have given every year for 5 years.* Every effort is made to correctly list and thank each supporter who allows us to make a public acknowledgement of their gifts to Whitefish Legacy Partners. If your name is missing or incorrect, we apologize for our error. Please contact us with corrections at (406) 862-3880 or email us at [info@whitefishlegacy.org](mailto:info@whitefishlegacy.org).



John & Cindy Ruth  
**William & Bev Ryan**  
**DiAnne & Peter Sabin**  
 Erin Sabin  
 Kirsten & Reid Sabin  
**Beth & Will Saltonstall**  
 Pamela Sankar  
 Andrea Sankar  
 & Mark Luborsky  
 Liza Sankar-Gorton  
**Bill & Linda Sawtelle**  
**Camisha Sawtelle**  
**Don & Colleen Scharfe**  
 Beth Schecher  
**Al & Sandy Schellinger**  
**Kelsey & David**  
 Schmid-Sommer  
**Louis Schmidt**  
 Rachel Schmidt  
 Susan Schmidt  
 Eric Schmidt & Deven Robinson  
**Randy Schwickert**  
 & Donna Taylor  
**Toby Scott**  
**Jon & Misty Scurlock**  
 Thomas & Julie Sebbly  
 Seemann Family  
**Melissa Segil & Alex Jopek**  
 Ryan & Wendy Seguine  
 Dan Sharaf  
**Tim & Hilary Shaw**  
**Heidi & Andrew Shors**  
 Dan & Kim Short  
 Lara Shortall  
**Jane & George Shryock**  
**Roger & Luann Sievers**  
**Connie & Paul Silverman**  
 Damon Simpson  
 Don Simpson  
 Dana Smith  
 Lucy Smith  
 Mark & Jennifer Smith  
 Martha Smith  
 Terri Smith  
**Will & Bonnie Smith**  
 Doug Smith  
 & Candace Shaeffer  
 Shiva Solaimanian  
 Soucek & Eberline, PC  
**Preston & Marjorie Spencer**  
 Spratling Family  
**Joseph & Deann Sramek**  
 Christine Stanley  
**Lester & Kristin Stanley**  
**Peter & Elaine Steele**  
 Joanna Stevens  
**Don & Linda Stolte**  
 Stumptown Vacation Rentals  
**Mark & Nancy Svennungsen**  
**Ann Swanson**  
 Meg Swanson  
**John & Laurel Swetnam**  
 Swift Creek Cafe  
**JeanAnne Swope**  
 Tamarack Cannabis  
 Tamarack Foundation, Inc  
 Audra Tasa  
**Kent & Kim Taylor**  
**Roy & Debbie Teal**  
**Chris & Meg Temple**  
**Nancy & Jesse Thompson**

Dana Thompson & Jud Alden  
 Julie & Sam Tickle  
 Somer Treat  
**David & Jeannine**  
**Trousdale**  
 Annette Tuebner  
 Ken Tuebner  
 Kris & Jon Tuebner  
 Nathan Tuebner  
 Nola Tuebner  
 Robert Tuebner  
 Keith & Holly Turley  
 Garrett & Priscilla Turner  
 Daniel Tutko  
 Todd Ulizio  
 Wendy Umphrey  
 Will Urbanski  
 Randy & Kim Uersery  
 Justin Van Emmerik  
 Barry Van Everen  
**Heidi & Mark Van Everen**  
 Kristin Van Everen  
 Oliver Van Everen  
**Darrel & Elizabeth Vankoten**  
 Sarah & Jordan Vaughan  
 Bill Vetter  
 Tagen & Carrie Vine  
**Michael & Heather Vrentas**  
**Ben & Katie Ward**  
 David Warner  
 Kathleen Warner  
**Jerry Washington**  
**Helen Weems**  
 & Joel Christiansen  
 Michele & Jason Wertz  
 Bill Westbrook  
 & Tamara Lundberg  
 Mary Jane Westermarck  
 Matt & Brandy Wetzler  
**Steven & Ardyce Whisler**  
**William & Karen Whitby**  
**Daniel White**  
**Whitefish Community**  
**Foundation**  
**Whitefish Mountain Resort**  
**Laura Whittemore**  
**Lawrence**  
 & Cindy Whittington  
 Bryan & Patty Wick  
**Wild Coffee Company**  
**Amy & Timothy Williams**  
 Becky & Larry Williams  
 Katie Williams  
**Rick & Sue Williams**  
**Marjorie & John Wilson**  
**Doug & Bet B. Wise**  
 Jeimi Woffinden  
 Stephen & Jennifer Wogen  
 Trisha Wolf  
 Fritz Wollett  
 Nancy Woodruff  
 & Steve Thompson  
**John & Lorrie Woods**  
 Workday  
 Kristin Yandora & Jon Amick  
**Alison Young**  
 Tom & Susan Zakos  
**ZaneRay Group**  
 Doug & Chris Zignego  
**Randall & Kristin Zuckerman**

# CORPORATE SPONSORS & SUPPORTERS



## FOUNDING SPONSORS

Buffalo Cafe  
 Glacier Bank  
 Glacier Cyclery & Nordic  
 Nelson's Ace Hardware  
 River Design Group  
 Sportsman & Ski Haus  
 Third Street Market

## CORPORATE SPONSORS

Applied Materials  
 Bulldog Saloon & Grill  
 Clearwater Montana Properties  
 DelTex Capital  
 Duck Inn  
 Hidden Moose Lodge  
 Hurraw! Balm  
 Tagen & Carrie Vine  
 Mindful Designs  
 Northwest Imaging  
 Old Montana Building Co.  
 RightOnTrek, Inc.  
 Stumptown Vacation Rentals  
 Tamarack Cannabis  
**The Pine Lodge**  
**Wasabi Sushi Bar & Ginger Grill**  
 Whitefish Lake Restaurant  
**Whitefish Mountain Resort**  
**Wild Coffee Company**

## TITLE EVENT SPONSORS

First Interstate Bank  
 Hammer Nutrition  
 Stockman Bank

## MAJOR EVENT SPONSORS

Alaska Airlines  
 BNSF Railway Foundation  
 Great Northern Bar & Grill  
 IV Element  
 Logan Health Whitefish  
 Orthopedic Rehab

The Firebrand Hotel  
 The Lodge at Whitefish Lake  
 Whitefish Convention  
 & Visitors Bureau

## EVENT SPONSORS

101 Central - Herb & Omni  
 Athletic Brewing Company  
 Backslope Brewery  
 Blackstar  
**Blue Cross Blue Shield of MT**  
**Buffalo Café**  
 BusyBee IV Hydration & Wellness  
 Edward Jones - Joel Pemberton  
**First Interstate Bank Volunteers**  
**Flathead Beacon Foundation**  
**Glacier Cyclery & Nordic**  
**Glacier Restaurant Group**  
**Great Northern Cycle & Ski**  
 Heitmann Productions  
 Jeremiah Johnson Brewing Company  
**Jersey Boys Pizza**  
**Kandahar Lodge**  
 Katherine Hayes Media  
 Legacy Bike Park  
 Logan Health Foundation  
 Mackenzie River Pizza  
 Malmquist Construction  
 Mindful Designs  
**Montana Coffee Traders**  
**National Parks Realty**  
 Parkside Credit Union  
**REI**  
 Runner Up Sports  
 Safeway  
**Sportsman & Ski Haus**  
 Stumptown Snowboards  
**Sweet Peaks Ice Cream**  
 Tamarack Cannabis  
 Uptown Hearth  
 Whitefish Outfitters & Tours  
 Whitefish Bike Retreat  
**Whitefish Mountain Resort**  
 Vibrant Roots

## GRANTS

Applied Materials Foundation  
 Blue Cross Blue Shield of MT  
 Cinnabar Foundation  
 Flathead Conservation District  
 Flathead Electric Cooperative -  
 Round Up for Safety  
 MT Fish & Wildlife Conservation Trust  
**MT Recreational Trails Program**  
 MT Stewardship Grant Program  
 Soroptimist Whitefish  
**Whitefish Community Foundation -**  
**Community Grant**  
**Whitefish Community Foundation -**  
**Great Fish Community Challenge**

## FOUNDATIONS

American Bank Foundation  
 Applied Materials Foundation  
 Bristol-Meyers Squibb Foundation  
 Crown of the Continent Institute  
**Flathead Beacon Foundation**  
**First Interstate BancSystem Foundation**  
**Kiita Foundation**  
 KLA Foundation  
 Povich Family Foundation  
 Robert A Waller Foundation  
 Tailwinds Charitable Foundation  
**Whitefish Community Foundation**

## ADOPT-A-TRAIL SPONSORS

Big Sky Recovery  
**Castor Family**  
**Center for Native Plants**  
 Clydesdale Outpost  
**Forestation**  
 Friends of Elkhorn HOA  
 Great Northern Cycle & Ski  
 Great Northern Homes  
 Kalpakis Family  
**Richardson Family**  
**River Design Group**  
 Schellinger Construction  
 Stack Financial  
 Management/InvesTech Research

Stallings Family  
 Whitefish Animal Hospital

## ADOPT-A-TRAIL CREWS

Applied Materials  
**Averill Hospitality**  
 Big Sky Recovery  
**Center for Native Plants**  
 Church of the Cross  
**Flathead Area Mountain Bikers**  
**Forestation**  
**Grouse Mountain Estates**  
 Grouse Mountain Lodge  
 Logan Health-Whitefish  
**NW Montana Backcountry Horsemen**  
 Parkside Credit Union  
**RE/MAX Whitefish**  
**Scharfe Family & Friends**  
**Spotted Bear Spirits**  
**Stack Financial Management/**  
**InvesTech Research**  
 Summits and Shenanigans  
 Two Bear Air  
**Whitefish Bike Retreat**  
**Whitefish Mountain Resort**

## TRAIL VOLUNTEERS

**Bill Love**  
 Glacier Surf Club  
 HeartStone Advisors  
 Powdered Souls

## TRAIL SPONSORS

Archer Excavation  
**Center for Native Plants**  
**City of Whitefish**  
**Forestation**  
 Greenscapes LLC  
**River Design Group**  
 Treeline Creative  
 USDA, Forest Service, Flathead  
 National Forest Challenge Cost Share  
**Working Women of Whitefish**

*Bold print indicates supporters who have given every year for 5 years.*

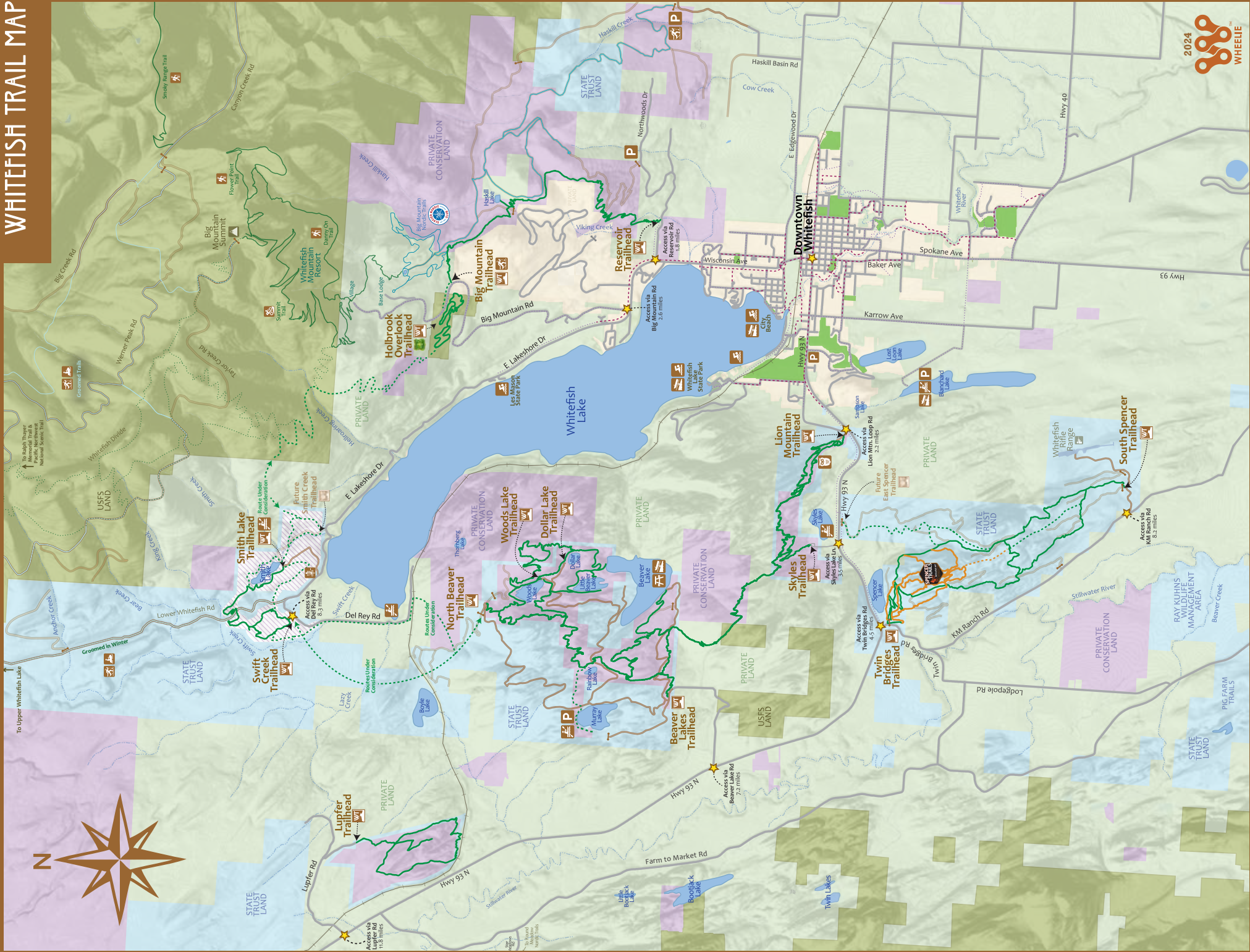
# THANK YOU TO OUR LEGACY SPONSORS

Legacy Sponsors have pledged \$50,000 over five years to support Whitefish Legacy Partners and the Whitefish Trail. Their long-term investment will leave a lasting legacy for the Whitefish Community. Thank you, **Whitefish Credit Union** and **Heartstone Advisors**! In 2025, we hope to find three more Legacy Sponsors in support of our work.





# WHITEFISH TRAIL MAP

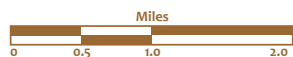






## LEGEND

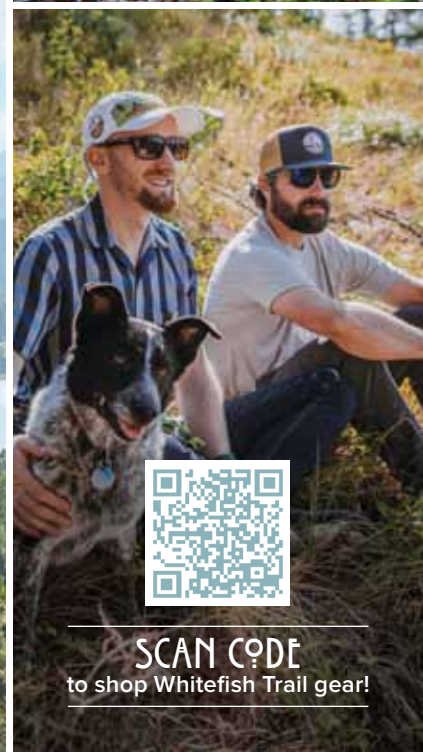
- |                                  |                            |
|----------------------------------|----------------------------|
| The Whitefish Trail & Trailheads | State Lands                |
| Proposed Whitefish Trail         | USFS Land                  |
| Spencer Freeride Trails          | City Parks                 |
| Groomed Nordic Trails            | City Limits                |
| Community Trails                 | Private Land               |
| Future Community Trails          | Conservation Land          |
| Distance From Downtown           | Proposed Conservation Land |
| Existing City Paths              |                            |
| Proposed City Paths              |                            |
| Groomed Trails                   |                            |



## OUR PARTNERS



[www.whitefishlegacy.org](http://www.whitefishlegacy.org)



SCAN CODE  
to shop Whitefish Trail gear!





## BOARD OF DIRECTORS

Reid Sabin, *Chair*

Somer Treat, *Vice Chair*

Julie Baldridge, *Treasurer*

Rachel Schmidt, *Secretary*

Diane Conradi, *Co-founder, ex officio*

Leslie Hunt, *Past Chair*

Mike Jopek, *Past Chair*

Marissa Keenan

Mike Meador

Nick Polumbus

Erin Sabin

Becky Smith-Powell

-----

## WLP STAFF

Heidi Van Everen, *Executive Director*

Cynthia Ingelfinger,  
*Director of Development*

Jedd Sankar-Gorton, *Program Director*

Nathan Tuebner, *Program Manager*

Sarah MacCormick, *Trail Coordinator*

Haley King, *Education Coordinator*

525 Railway St., Suite 206 | PO Box 1895

Whitefish, MT 59937

406.862.3880 | [info@whitefishlegacy.org](mailto:info@whitefishlegacy.org)

[www.whitefishlegacy.org](http://www.whitefishlegacy.org)



Help us maintain an accurate mailing list  
by letting us know of changes to your address.  
Email [info@whitefishlegacy.org](mailto:info@whitefishlegacy.org) with corrections.



PO Box 1895

Whitefish, MT 59937

[www.whitefishlegacy.org](http://www.whitefishlegacy.org)

## WE ARE IMMENSELY GRATEFUL FOR OUR 2024 PARTNERS AND COLLABORATORS:

City of Whitefish • Department of Natural Resources  
& Conservation • Flathead Area Mountain Bikers  
Flathead National Forest • Glacier Nordic Club  
Forestation • Land Water Law • MT Fish, Wildlife & Parks  
WLP Event, Education & Trail Volunteers

## GIVE BACK & DONATE

Whitefish Legacy Partners relies on the  
generosity of trail users, conservation-minded  
supporters, and local businesses. Your donation  
is an investment in the future of our community.  
Enjoy the Whitefish Trail, be a conservation  
champion, give back and donate today!



SCAN CODE  
to make your  
2025 donation.

