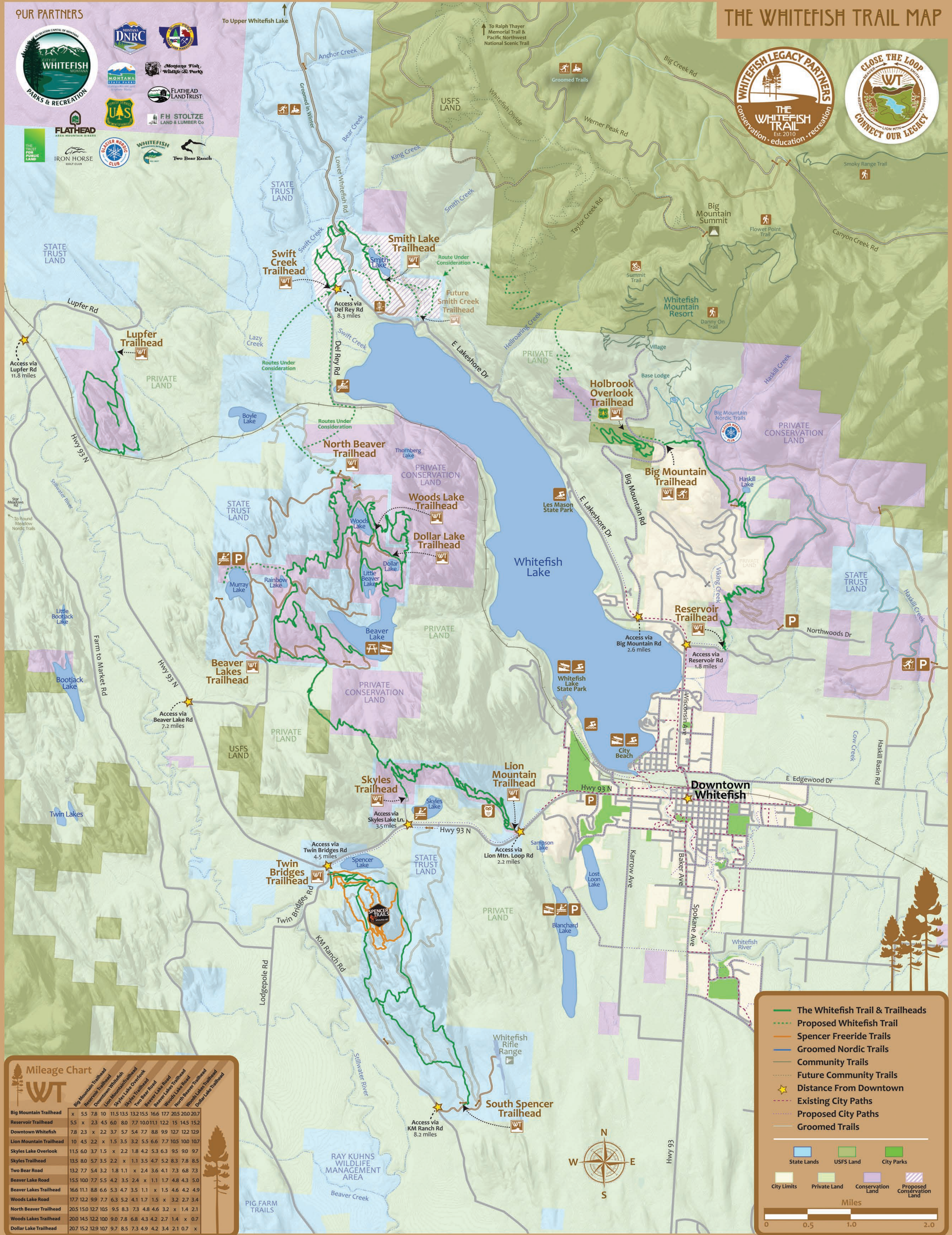


OUR PARTNERS



THE WHITEFISH TRAIL MAP



Mileage Chart

	Big Mountain Trailhead	Reservoir Trailhead	Downtown Whitefish	Lion Mountain Trailhead	Skyles Trailhead	Two Bear Road	Beaver Lake Road	Beaver Lakes Trailhead	Woods Lake Road	North Beaver Trailhead	Woods Lakes Trailhead	Dollar Lake Trailhead
Big Mountain Trailhead	x	5.5	7.8	10	11.5	13.5	15.5	16.6	17.7	20.5	20.0	20.7
Reservoir Trailhead	5.5	x	2.3	4.5	6.0	8.0	7.7	10.0	11.1	12.2	15	15.2
Downtown Whitefish	7.8	2.3	x	2.2	3.7	5.7	5.4	7.7	8.8	9.9	12.7	12.9
Lion Mountain Trailhead	10	4.5	2.2	x	1.5	3.5	3.2	5.5	6.6	7.7	10.5	10.7
Skyles Trailhead	11.5	6.0	3.7	1.5	x	2.2	1.8	4.2	5.3	6.3	9.5	9.0
Two Bear Road	13.5	8.0	5.7	3.5	2.2	x	1.1	3.5	4.7	5.2	8.3	7.8
Beaver Lake Road	15.5	7.7	5.4	3.2	1.8	1.1	x	2.4	3.6	4.1	7.3	6.8
Beaver Lakes Trailhead	16.6	11.1	8.8	6.6	5.3	4.2	3.5	x	1.1	1.7	4.8	4.3
Woods Lake Road	17.7	12.2	9.9	7.7	6.3	5.2	4.1	1.1	x	1.5	4.6	4.2
North Beaver Trailhead	20.5	15.0	12.7	10.5	9.5	8.3	7.3	4.8	4.6	x	3.2	3.4
Woods Lakes Trailhead	20.0	14.5	12.2	10.0	9.0	7.8	6.8	4.3	4.2	3.2	x	0.7
Dollar Lake Trailhead	20.7	15.2	12.9	10.7	9.7	8.5	7.3	4.9	4.2	3.4	2.1	x

Legend

- The Whitefish Trail & Trailheads
- Proposed Whitefish Trail
- Spencer Freeride Trails
- Groomed Nordic Trails
- Community Trails
- Future Community Trails
- Distance From Downtown
- Existing City Paths
- Proposed City Paths
- Groomed Trails

Land Ownership

- State Lands
- USFS Land
- City Parks
- City Limits
- Private Land
- Conservation Land
- Proposed Conservation Land

Miles

0 0.5 1.0 2.0

Legacy Sponsors

Our most important partner is YOU!

This is a community supported multi-use, non-motorized trail system. It is made possible by our donors, volunteers, and partners.

GIVE BACK

Be a Whitefish Trail Friend or Family!

The Whitefish Trail pays for your right to recreate here. Your donation is critical to our success.

Give back and donate today.

www.whitefishlegacy.org

Founding Sponsors