



It's no surprise that Flathead Valley residents and our booming tourism economy are hungry for more conservation and recreation on local lands. Trail usage has increased, the local rental bike fleets have doubled, and the WLP phone rings constantly with visitors seeking advice on where to explore next. We asked locals about their favorite aspect of the Whitefish Trail, and the top three answers reveal the backbone of our work: trails close to town, public access to protected, open lands, and a quality trail network with a high level of maintenance.

To the west, 1,520 protected acres at Lion Mountain, Skyles, and Beaver Lakes are connected with a permanent trail corridor. 640 acres of working forest at Lupfer are conserved forever, and to the east, over 10,000 acres of prime habitat and clean, drinking water in Haskill Basin and Trumbull Creek will remain unchanged for generations to come.

Connecting our local conservation lands with a front-country trail system is smart in the long-term and has improved our

quality of life. A solid partnership with the City of Whitefish and our strong base of community support combined with the growing Whitefish Trail Endowment make it all possible.

As we work to connect our legacy lands, Smith Lake is the next conservation and recreation opportunity. The south-facing benches are important wildlife habitat and provide a seasonal migration corridor between the high country on the Whitefish Range and the Swift Creek lower valley. The hiking, biking, fishing, and hunting opportunities have been enjoyed by the community for decades, and the cold, clear waters of Smith Creek provide invaluable watershed protection for Whitefish Lake. Smith Lake deserves a permanent solution, and we need your help to ensure that tomorrow's generations can enjoy the same opportunities we enjoy every day.

*Mike Jopek, Board Chair
Whitefish Legacy Partners*





board &

MIKE JOPEK, chair
REID SABIN, vice chair
FRED JONES, treasurer
JULIE BALDRIDGE, secretary
LESLIE HUNT
ED LIESER
HANK RICKLEFS
BECKY SMITH-POWELL
DIANE CONRADI, ex officio

staff

HEIDI VAN EVEREN
executive director
ALAN MYERS-DAVIS
development director
MARGOSIA JADKOWSKI
program director



HIT THE TRAIL! CHALLENGE MAY 1st - 31st

Let's Hit the Trail! Our generous sponsors are challenging the community to log 10,000 miles during the month of May. For every mile you bike, hike, run, or ride on the Whitefish Trail, our sponsors will donate \$1 to support our local trail and protected lands. Participate as an individual or create a Workplace Team. Help us reach our 10,000 mile goal and hit the trail this spring!

10,000 miles = \$10,000

1
SIGN UP

2
TRACK YOUR
MILES
online, with Strava,
or by form

3
SUPPORT
YOUR
TRAIL

CHALLENGE SPONSORS

Dennis & Phyllis
Washington Foundation

Glacier Medical
Associates

BlueCross BlueShield
of Montana

Glacier Bank

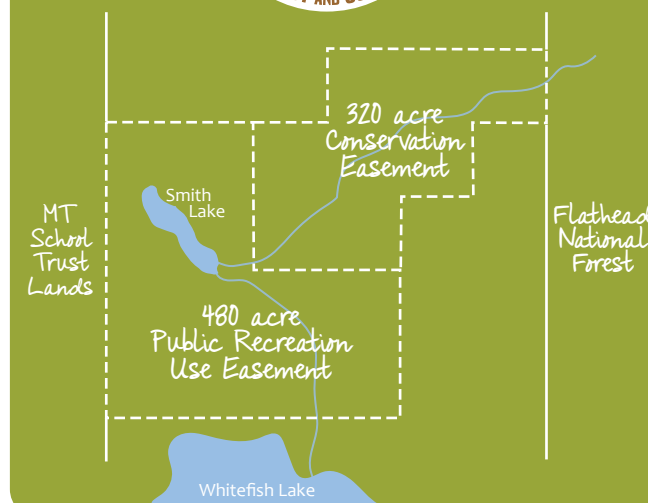
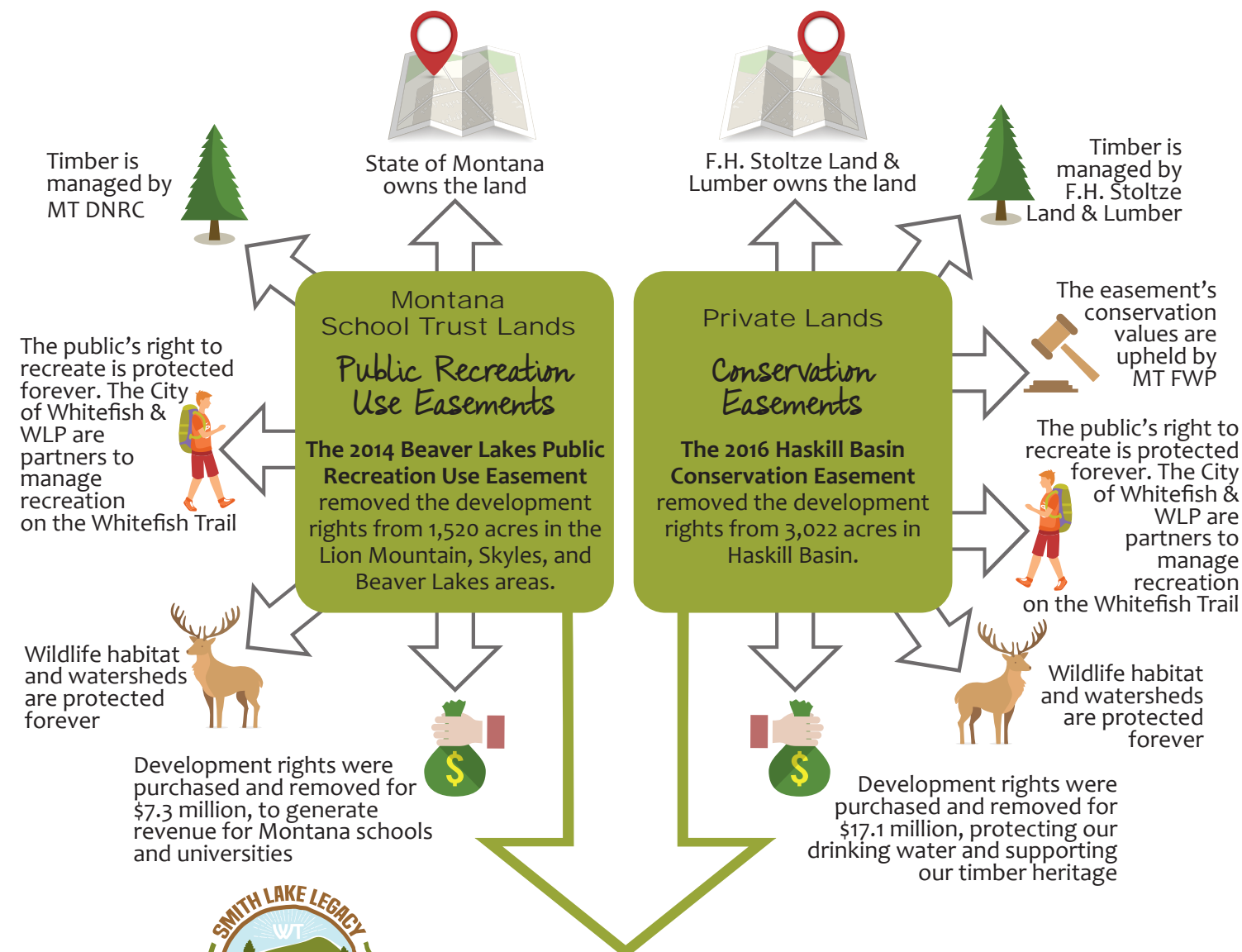
The RD Foundation

North Valley Hospital &
Kalispell Regional Medical
Center

thank you
for supporting health &
wellness in our community!

CONSERVATION ON OUR LOCAL LANDS

Land ownership is like a bundle of sticks: each stick represents a different set of rights, such as development rights, timber rights, or access rights. Sometimes one owner holds all the sticks, and sometimes the sticks are spread across multiple owners. Permanent conservation removes the development stick from the bundle, but the mechanism for removing it is different with State lands and private lands.



The Smith Lake Legacy project will use these same conservation mechanisms to protect a total of 800 acres across State and private lands to connect the Stillwater State Forest to Flathead National Forest. This permanent protection will create a critical connection for wildlife habitat, watershed protection and public recreation as surrounding private lands are further developed in coming years. The forests will continue to be sustainably managed, by DNRC on State lands and F.H. Stoltze Land & Lumber on private lands, to provide wildfire protection and support our local timber economy. Flathead Land Trust will ensure the conservation values are upheld on private lands ensuring healthy ecosystems and balanced use. As with Beaver Lakes, millions of dollars will be invested in the Montana School Trust paying dividends every year to schools and universities across the state. This project will continue the community's legacy of conservation and ensure Smith Lake and the surrounding lands will be enjoyed for generations to come.

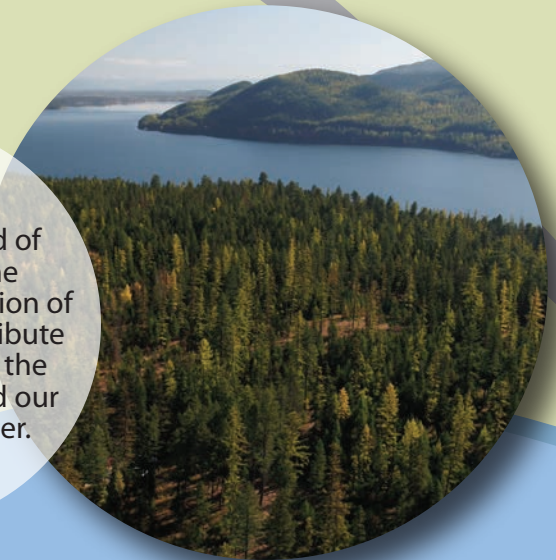


The existing trails at Swift Creek include a 1 mile out and back hike to a beautiful view of Swift Creek on accessible trail.



SWIFT CREEK TRAILHEAD

E. LAKE SHORE DR.



Located at the head of Whitefish Lake, the permanent conservation of Smith Lake will contribute to the protection of the larger watershed and our clean drinking water.

Smith Lake is loved by anglers and boaters of all ages. The shallow, emerald water is stocked with native westlope cutthroat trout and triploid (sterile) rainbow trout.



SMITH LAKE



Whitefish Disc Federation's course offers another great way to enjoy the area!

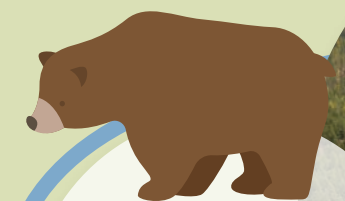


UPPER SMITH CREEK

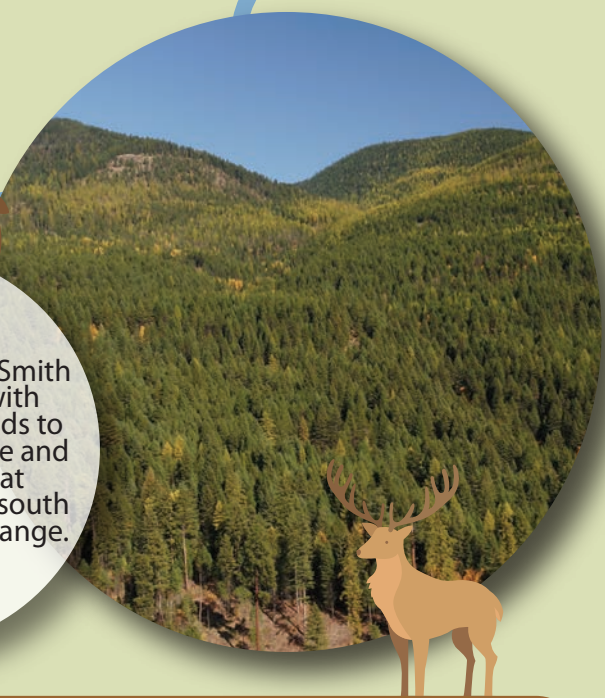


The addition of a dock and day use amenities will create a site for families to enjoy all that Smith Lake has to offer!

LOWER SMITH CREEK



The drainages above Smith Lake will connect with protected private lands to the broader landscape and core wildlife habitat stretching north and south along the Whitefish Range.



SMITH LAKE CONSERVATION

Simply put, Smith Lake is a gem. Its clear, shallow waters are the perfect family fishing destination and the surrounding larch forests and vistas can be explored by foot, bike or horseback. Streambank wild hollyhocks, western tanagers, and indian paintbrush dot the landscape, providing a colorful backdrop to the upper slopes of the Whitefish Range.

Smith Lake will soon be a favorite front-country destination. The surrounding 480 acres of State Trust Lands will be connected to Hellroaring Basin with permanent conservation and improved public access on 320 acres of private lands. The conservation value of Smith Lake is clear, but we need your input to establish the Whitefish Trail recreation priorities. Proposed improvements include a loop trail around Smith Lake, a fishing dock, footbridges and trails to experience Smith Creek, a loop route back to the Swift Creek Trailhead, and a new trailhead for direct access to the high country. As we continue to complete the community's vision for the Whitefish Trail, Smith Lake will be the starting point for trail adventures to Big Mountain and back to Haskill.

Protecting Smith Lake will remove the development rights from vulnerable DNRC lands, secure permanent public access, maintain a working forest for fire resilience and sustainable timber production, and generate millions of dollars for Montana schools and universities.



PROPOSED SMITH CREEK TRAILHEAD



WHITEFISH LAKE

2018 EDUCATION PROGRAMS



2,144

PARTICIPANTS LEARNING
ON THE TRAIL



KIDS SPENT

3,387

HOURS UNPLUGGED ON
THE TRAIL



32%

INCREASE IN EDUCATION
PROGRAM
PARTICIPATION



CHRISTIANE HINTERMAN PREU
seasonal education coordinator

meet
Cheryl



In 2018, Cheryl Tillemans of Somers, MT came to almost all the Guided Learning and Community Hikes on the Whitefish Trail. Whether it was a Bear Aware hike, learning about wildflowers, or an outing with the Kalispell Veterans Center, Cheryl's smiling face was always part of the group.

In the past few years, Cheryl has been on an amazing health and wellness journey. "After having some serious heart issues, I was a little intimidated to start hiking at first, but going out on the Whitefish Trail, especially with a group and leader, helped me become more confident. Once I started hiking, I just kept going!" Since then, Cheryl has lost an incredible 70 pounds and found a more active lifestyle. "Last year I did 16 5k races, with at least one each month of the year. My husband Gary says I've become an athlete, but I don't know about that," she jokes. For what it is worth, we are with Gary on this one!

"A lot of people might be intimidated to get out and start. Whether you've lived here forever or are brand new, when you're working to get healthy it's something you have to overcome. On the Whitefish Trail, it doesn't matter which trailhead you choose—they are all great and they are all approachable. It's a great place to begin if you want to start getting out more, and there's so many options to keep pushing yourself." For Cheryl, the camaraderie she found on WLP's hikes was just as important as the trail itself. "It definitely made me feel more comfortable going out with a group. Once you're out there, everyone is there for the same experience - to learn and enjoy the trail with others. I really appreciate that WLP's staff takes the time to share their passion and knowledge on these community hikes."

**"Once I
started
hiking,
I just kept
going!"**

We are inspired by Cheryl's story and the power that our trails and open spaces have to change lives and build a healthy community. As for Cheryl, you will probably see her out on the trail this summer. "Now I venture out on my own more, but I still love coming back to the Whitefish Trail. Last year, we hiked from Swift Creek and didn't quite make it to Smith Lake. This year I want to go back and make it the whole way to the lake."



"Thank you for this amazing program! Kalena had so much fun and I know she will be more confident enjoying our beautiful trails in the future! That was her first time trail riding and we are excited to get back out there and do more exploring on our mountain bikes! Thank you!"

Lacota Cavender



In 2018 Whitefish Legacy Partners launched a new education program to bring teenage girls, ages 12-15, out on the Whitefish Trail through a series of mountain biking, hiking, and volunteer events. Girls on the Trail provides girls in the Flathead Valley an opportunity to find their own love of mountain biking, their own appreciation of trails and open lands, and their own strength through hard work and mentorship. In its first year, Girls on the Trail brought together girls from Whitefish, Columbia Falls, and Kalispell, along with community mentors, for a week of fun on the trail.

The inaugural year of Girls on the Trail was made possible with support from the Katy Branston Fun Fund through the Whitefish Community Foundation. Honoring the memory of Katy, a friend of the trail and longtime Trail Patrol member, with a program to share her love of trails, bikes, and community service was a special experience for WLP and her friends and family. Watching the girls come out of their shells, form friendships, and push themselves out of their comfort zones was a wonderful example of the power of trails, and the activities they allow, to build confidence and resiliency in youth.

In 2019 we are looking forward to growing Girls on the Trail into a week-long summer program, incorporating a wider variety of activities and experiences to reach more girls.

For more information visit
www.whitefishlegacy.org/youth-programs

"This is a great living memory to Katy. Any one of those girls riding down that golden trail could be her in some way."

Katy's family



2019 WHITEFISH TRAIL

COMMUNITY PROGRAMS



KIDS PROGRAMS AT THE WT LEARNING PAVILION

Meet at Lion Mountain Trailhead. Two hour programs.
No registration required, kids must be accompanied by an adult.
Suitable for ages 5 to 12.

FOREST CRITTERS - Wednesday June 19, 10 am
Discover the critters of the Whitefish Trail on a nature walk.

CLAY DAY - Tuesday June 25, 10 am
Play with squishy clay and create imprints of nature to take home.

TOTS ON THE TRAIL - Wednesday July 10, 10 am
Join the Whitefish Community Library for this special toddler program.

PAINTING FROM NATURE - Thursday July 11, 10 am
Be inspired by nature around you as you paint a masterpiece.

FAIRY HOUSES - Tuesday July 16, 10 am
Use your imagination as you explore the fairy land of Lion Mountain and build homes for its inhabitants.

NATURE MOBILES - Wednesday July 24, 10 am
Bring a little of the forest home with a mobile made from nature.

SCAVENGER HUNT - Tuesday July 30, 10 am
Explore Lion Mountain with a nature scavenger hunt!

FOREST EXPLORERS CAMP on the Whitefish Trail



Wrap up summer with a fun day camp for kids
ages 6-10 at the WT Learning Pavilion.
Sign up for one week or both!

WEEK 1: August 5-8, Monday-Thursday
Morning session: 9 am - 12 pm
Afternoon session: 1 pm - 4 pm

WEEK 2: August 12-15, Monday-Thursday
Morning session: 9 am - 12 pm
Afternoon session: 1 pm - 4 pm

COST:

\$40/week for WT Friends and Families or
\$160/week
Pre-registration required.

Register at www.whitefishlegacy.org/youth-programs

TEEN PROGRAMS

NATURE IN FOCUS
July 16, 6-8 pm
August 8, 6-8 pm



GIRLS ON THE TRAIL
July 8-11, 12 pm - 5 pm



Nature in Focus and Girls on the Trail teen programs are free. Pre-registration is required.
Visit www.whitefishlegacy.org/youth-programs to sign up

New events are always being added! Visit www.whitefishlegacy.org for the full schedule!

All events are free and do not require registration. They are suitable for all fitness levels and are family friendly.

Guided Learning Hikes

WINTER WILDLIFE TRACKS --- Saturday February 16, 10 am --- Lion Mountain Trailhead
Learn how to identify wildlife tracks in the snow on this easy 2 mile hike.

KALISPELL BEAR AWARE PRESENTATION IMAGINE IF LIBRARIES & REI --- Tuesday April 23, 6 pm --- Kalispell Library
Learn about bear biology and behavior, how to recreate safely in bear country, what to do in an encounter, and practice deploying inert bear spray during this interactive presentation. PREREGISTRATION IS REQUIRED.

WHITEFISH BEAR AWARE PRESENTATION --- Tuesday April 30, 6 pm --- Grouse Mountain Lodge
Learn about bear biology and behavior, how to recreate safely in bear country, what to do in an encounter, and practice deploying inert bear spray during this interactive presentation.

SPRING MUSHROOM HUNT --- Sunday May 4, 2 pm --- Swift Creek Trailhead
With spring rains come mushrooms! Hunt for wild mushrooms and learn to identify them.

BEAR AWARE HIKE --- Thursday May 23, 6 pm --- Lion Mountain Trailhead
Learn about bear behavior and safety on an easy 2 mile hike.

WILDFLOWER WALK WITH MT NATIVE PLANT SOCIETY --- Wednesday June 5, 6 pm --- Lion Mountain Trailhead
Learn how to identify the wildflowers of the Whitefish Trail with an easy 2-3 mile hike.

BEAR AWARE HIKE --- Wednesday September 18, 10 am --- Lion Mountain Trailhead
Just in time for hunting season, learn what you need to know to be safe in bear country during the fall on this easy 2 mile hike.

FALL MUSHROOM HUNT --- Sunday October 13, 2pm --- Woods Lake Trailhead
Cooler fall weather means mushrooms are back! Come hunt for wild mushrooms and learn to identify them.

Community Hikes & Bikes

MOTHERS DAY HIKE WITH OUTSIETY --- Sunday May 12, 11 am --- Reservoir Trailhead
Bring the whole family out to celebrate Mother's Day with a 3 mile hike.

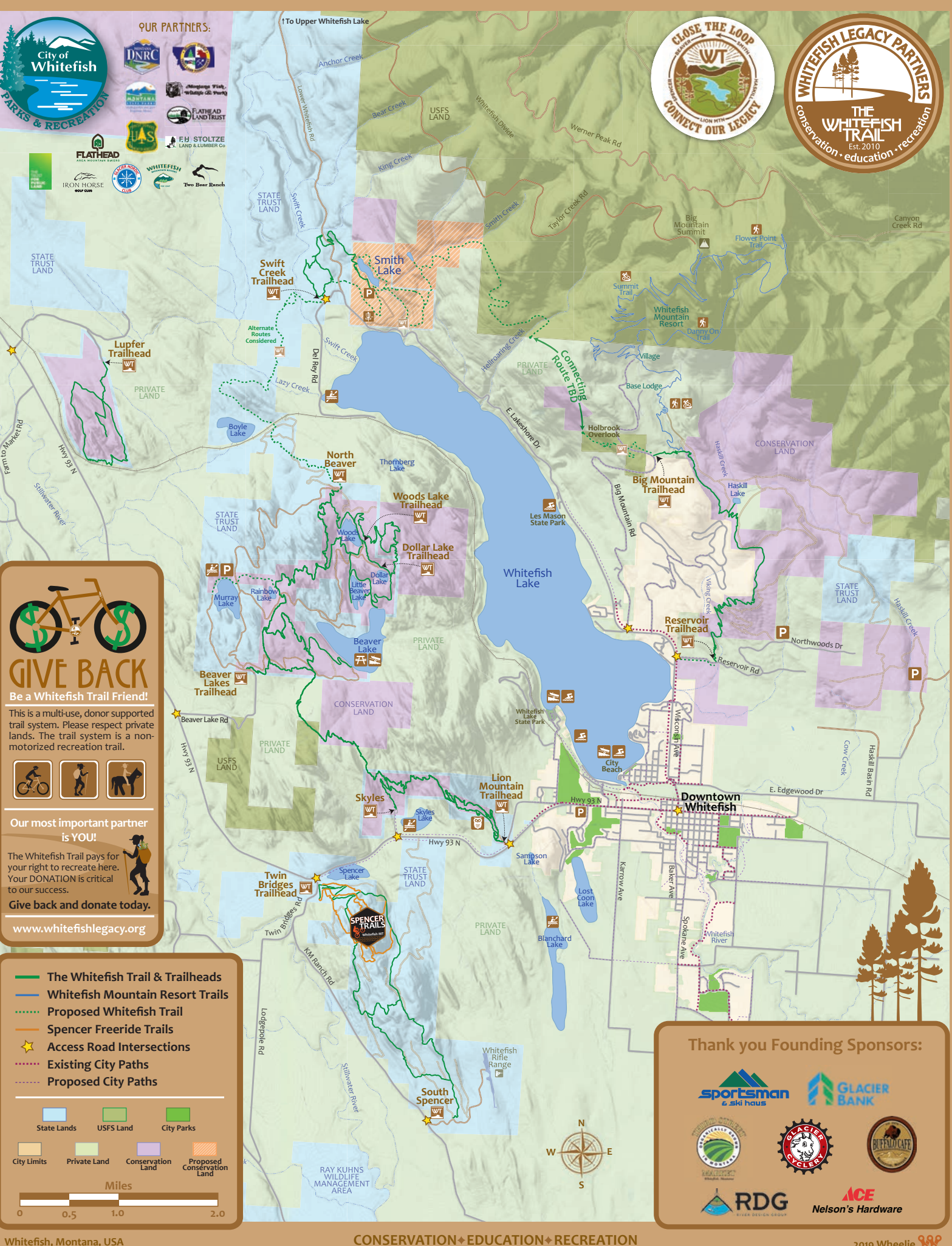
FITNESS HIKE --- Tuesday May 14, 10 am --- Reservoir Trailhead
Get moving on the trail with a group hike led by fitness trainers.

GROUP MOUNTAIN BIKE RIDE --- Tuesday May 21, 6pm --- Beaver Lakes Trailhead
Join us for a beginners ride with an instructor or intermediate group ride.
Free rentals available from Glacier Cyclery.

COMMUNITY HIKE WITH KALISPELL VET CENTER --- Tuesday June 4, 6 pm --- Lion Mountain Trailhead
Whether you're a veteran, have a loved one who is, or just want to show your support, join us for a hike!

WELLNESS HIKE WITH KALISPELL REGIONAL HEALTHCARE --- Wednesday June 12, 10 am --- Lion Mountain Trailhead
Looking to get in shape or recovering from a medical issue? Explore the trail for your health!

FALL COMMUNITY HIKE --- Tuesday September 10, 6 pm --- Big Mountain Trailhead
Enjoy the changing fall colors and views with a 3 mile easy to moderate hike to the Haskill Lake Boardwalk.



trails now

trails forever



The Whitefish Trail Endowment safeguards the long-term health of our community trail system for future generations, ensuring that we can forever enjoy free recreation access to our local lands. Volunteers provide much of the maintenance needed on the trail, clearing downed trees and brush, and improving tread and drainage. Revenue produced by the WT Endowment is also needed for other costs including replacing signs, cleaning, stocking, and pumping trailhead toilets, and snowplowing. Cultivating an ethic of trail stewardship in our community and growing a healthy endowment will ensure our trails are well cared for, for generations to come.



As we work to build trails for our community to enjoy now, growing the Whitefish Trail Endowment ensures those trails will continue to serve our community forever.

“The Whitefish Trail brings immense value to our community by inspiring future conservation leaders and providing permanent outdoor recreation opportunities for families of the Flathead Valley. We are excited to invest in the future of a project that offers so many benefits, to our personal lives and to the community as a whole.”

Paul & Wendy Faganel

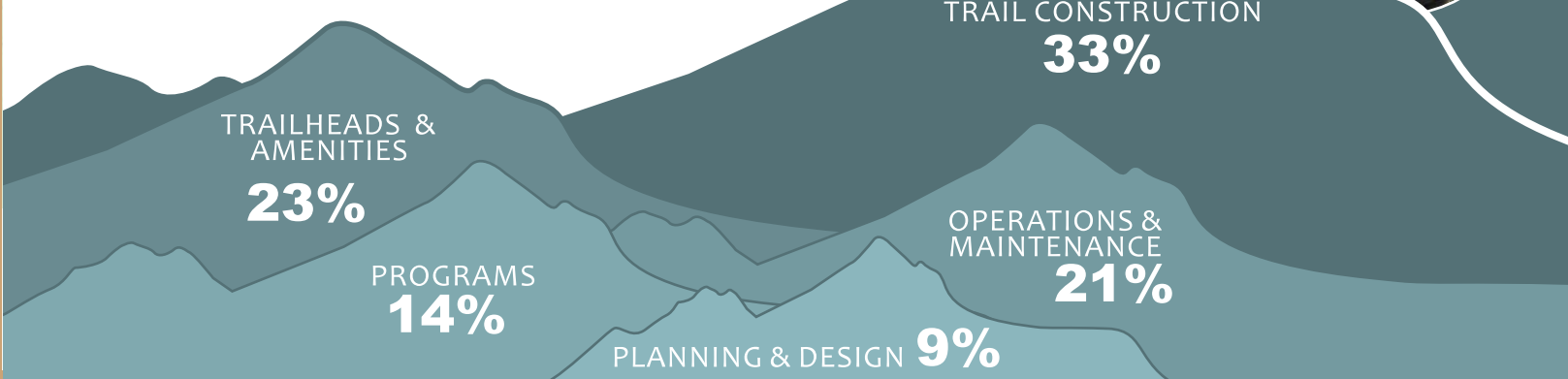
How to Give

Support trails now and trails forever with a gift to the Whitefish Trail Endowment. Your donation to our qualified MT endowment will provide a MT tax credit of 40% of the value of the gift - up to a \$10k credit per year, per individual. Or leave your legacy with a charitable bequest through your will or living trust.

The Whitefish Trail

2009-2018 expenses

\$2.10 MILLION



2018 VOLUNTEERS

37
Group Trail Work Days

41
Trail Patrollers

TOTAL VALUE OF VOLUNTEER TIME
\$37,915
DONATED TO THE TRAIL

CARRIE JOHNSON
seasonal trail coordinator



REVENUE
\$274,242

EXPENSES
\$259,581

Grants & Foundations
23%

Friends & Families
22%

Major Donors
22%

Events
21%

Sponsors
11%

In-Kind Donations
\$16,982

Surplus Invested in WT Endowment
\$14,661

Volunteer Labor
\$37,916

Recreation
30%

Conservation
22%

Education
17%

Fundraising
17%

Outreach
10%

Administration
5%

thank



you!

'Biggest Catch' award for most donors

208
Total Donors

Whitefish Legacy Partners
\$99,169
total community donations

\$10,200
WCF matching grant

21
First time donors

The 2018 Great Fish Community Challenge was a great success for Whitefish Legacy Partners and all the local non-profits participating. Together, the Whitefish Community Foundation and the community raised an incredible \$2,406,810!

Kevin Abel
Charlie & Susan Abell
Koel & Lazette Abell
David & Ruth Ackroyd
William & Olga Adams
AGL Foundation
Lin & Kathy Akey
Angora Ridge Foundation
Carrie & Jim Archibald
David Archibald
Summerfield & Julie
Baldrige
Roger Barber & Mary
VanBuskirk
Joe & LuAnn Basirico
William & Betsy Bayne
Mary & Ronald
Behrendt
Todd & Glenna Bergland
Carol Bibler & Jim Watson
Jack & Nancy Biddle
Cameron Blake &
Sandy Gray
Noah & Erin Bodman
Gretchen Boyer
Scott & Barb Brant
Becky Briber & Doug Griesel
Mark Buckland
Bill & Kay Burg
Charles Cameron &
Vita Wright
Sue & Bill Carpenter
Helen & Larry Cates
Susan Causey
Linda Chauner
Gail Cleveland & Bruce
Tannehill
Catherine Cloutier
Jenny Cloutier
Diane Conradi & Steve
Braun
Kevin Corbett
Tim & Deidre Corson
Joe & Jill Courtney
Mark & Constance Cowett
Woody & Betsy Cox
Karl & Kathy Cozad
Jen & Jerry Croskrey

Carol Cunningham
Katherine Curtis
Dave Stewart
Gary & Annell Danczyk
Glenn Dehekker
Jimmy & Michaelan
DeHerrera
Sandy Dillon
Mark & Lynnette Donaldson
Mary Lynn & Jack Dykstra
Eagle Home Inspection
Megan Eandi
Jen, David, & Trajan Elden
Felicia Ennis
Bart & Carole Erickson
David & Sarah Ericson
First Interstate Bank
Donald & Joann Fleming
Donald & Margaret Forster
Rod & Vonda Garcia
Bob & Melissa Genovese
Scott & Tracey Gerber
Glacier Bank
Tim & Ali Good
Steven & Stephanie Gordon
Richard Gordon & Cheryl
Watkins
David Grady & Linda
Engh-Grady
Great Northern Brewing
Company
Ryan & Beth Gunlikson
Adam & Dawnelle Hammatt
Tom & Stephenne Sue
Harding
John & Kathi Hartlieb
Brian & Shannon Haycox
Maureen & Michael Hein
Hidden Moose Lodge
Richard & Suzanne Hildner
Russ & Linda Hobbs
Holt Family
Mike & Lindsey Hromadka
David & Linda Hunt
Leslie & Will Hunt
Martha Hunt
Matt & Katie Huston
Ila B. Dousman Fund

Michele Irelan
Charles James
Pat & Bob Jepsen
Paul & Ann Jeremiassen
Jewish Communal Fund
Richard Stevens & Ellen
Johanson
Jon & Diane Johnson
Gordon Johnson
Fred & Sarah Jones
Jeff Jones
Mike Jopek & Pam Gerwe
Rodney & Catherine Juno
John & Lisa Kalbfleisch
Greg & Connie Kasper
John & Maureen King
Murray Knetchel
Corey & Michele Koenig
John Kramer
Krumholz Fund - Joe &
Cindy Gregory
Norm & Mary Kuennen
John & Dana Lacey
Tom & Cindy LaChance
Paul Lamb
Pat LaTourelle
Bruce Lieffring & Brenda
Winkler
Sue & Ed Lieser
Mary & Robin Line
Robert & Marcia Litchfield
Necile Lorang
Steve Lull & Meg Wolfe
Gayle & Scotty MacLaren
Mann Mortgage
Katie & Doug Markus
Marlin & Maureen
McKeever
Babby McCartney
Abe & Shelley McCoy
Marjory McClaren & Fred
Longhart
Richard Menicke & Jen
Asebrook
Mary Anne Miles
Laurie & Martin Miller
Zach Miller & Grete
Gansauer

Frances Montanye &
Alan Myers-Davis
Jeff & Amy Mow
Tim & Kerry Mushkin
Roberta Myers & Larry
Davis
George & Kristen Nix
Tammy & Stephen Nix
Dr. Naomi Barnes
North Valley Hospital
Foundation
Northwest Imaging
Marc & Kelly O'Brien
Marcia O'Neil
Molly Oding
Ben & Jennifer Osburn
Margaret Parodi
Kellsey Perkins
Karen Perser & Sydney
Lillard
Doug & Carolyn Pitman
Dow Powell & Becky
Smith-Powell
Rebecca Powell
Tom & Teresa Quinn
Joe & Beverly
Raudabaugh
Dr. Kelly Redfield &
Dr. Daniel Zlogar
John & Beth Repke
Christopher Ridder & Susan
Moffitt
Sue Robison
Ernest & Jane Rouse
Dianne & Peter Sabin
Sage & Cedar
Wayne Saurey & Marisa
Van Lawick
Kelsey & David
Schmid-Sommer
Eric Schmidt
Louis Schmidt
Charlie & Nancy Schuber
Randy Schwickert & Donna
Taylor
Toby Scott
Annika Silverman
Connie & Paul Silverman

Preston & Marjorie Spencer
Joseph & Deann Sramek
Christine Stanley
Sarah & Anthony Stewart
Don & Linda Stolte
David Streeter
Greg Strong
Brian & Gail Sullivan
Mark & Nancy Svenningsen
Ann Swanson
JeanAnne Swope & Jim
Mechem
Jeanne Tallman & Don
DuBeau
Kim & Kent Taylor
Lesley & Derreck Thompson
Steve Thompson & Nancy
Woodruff
Nancy Tighe
Tim Murphy State Farm
Towne Printer
Leo Tracy
David & Jeannine Trousdale
Darren Turgeon
Heidi & Mark Van Everen
John & Kristen
Vandenburgh
Darrel & Elizabeth Vankoten
Michael & Heather Vrentas
Benjamin & Katherine Ward
Diane & Richard Ward
Jerry Washington
Shawn Watts & Bernadette
Duperron
Becca Wheeler
Steven & Ardyce Whisler
Daniel White
Marjorie & John Wilson
Doug & Bet B. Wise
Alison Young
Eric & Linda Young
ZaneRay Group
Doug & Chris Zignego
Linda Zimet



YOUR TRAIL

thank you for supporting conservation, recreation,
& education in our community

1214
people have
donated over
the life of the
project

with a median
donation of
\$100

in 2018
108
new donors
stepped up

Your donations add up to make it all possible!

2018 CORPORATE SPONSORS

Please support these businesses that are committed to conservation, education and recreation in our community:

CORPORATE FOUNDERS

Buffalo Café
Glacier Bank
Glacier Cyclery & Nordic
Nelson's Ace Hardware
River Design Group
Sportsman & Ski Haus
Third Street Market

TITLE SPONSORS

Don K Subaru
Whitefish Therapy &
Sport Center

ADOPT-A-TRAIL SPONSORS

Earth Elements Design Center
Friends of Elkhorn HOA
Great Northern Homes
Great Northern Cycle & Ski
HeartStone Advisors
Hydrospheric Solutions
Kalpakis Family Foundation
Richardson Family
Schellinger Construction Co.
Step Ahead Foot & Ankle Clinic
Sweetgrass Psychological
Services
The Castor Family

MAJOR EVENT SPONSORS

Alaska Airlines
Burlington Northern Santa Fe
Railway
Craggy Range Bar & Grill
Edward Jones - Financial
Advisors: Claudine Johnson
First Interstate Bank
Great Northern Bar & Grill
Great Northern
Brewing Company
Hammer Nutrition

National Parks Realty
Step Ahead Foot & Ankle Clinic

CORPORATE SPONSORS

Bonsai Brewing Project
Bulldog Saloon & Grill
The Firebrand Hotel
Five Star Rentals of Montana
Flathead Beacon
Forestation
Glacier Restaurant Group
Good Medicine Lodge
Great Northern Brewing
Company

Hidden Moose Lodge
Hurraw! Balm
Lakeshore Rentals
The Lodge at Whitefish Lake
The Montana Corporation
Northwest Imaging
Odysseys Unlimited
Pine Lodge
Sage & Cedar
Superfeet
Tim Murphy State Farm
Tate Interiors
The Toggery
Towne Printer
Wasabi Sushi Bar & Ginger Grill
Weyerhaeuser
Whitefish Chamber of Commerce
Whitefish Chiropractic
Whitefish Lake Restaurant
Whitefish Mountain Resort
Whitefish Tree Service

EVENT SPONSORS

Beyond the Boundaries
Boedie Cycles
Bonsai Brewing Project
Celebrate Event & Party Rentals

Culligan Water
Ed McGrew BBQ
The Firebrand Hotel
First Interstate Bank Volunteers
Fork in the Road
Get A Grip
Glacier Cyclery & Nordic
Great Northern Cycle & Ski
Grizzly Security
Hammer Nutrition
Jersey Boys Pizza
The Lodge at Whitefish Lake
Montana Coffee Traders
Morley Canoes
Mountain Berry Bowls
National Honors Society
PettyJohn's Water Store
REI Kalispell
S & M Taco Truck
Shanti Yoga Studio
SobbaCycle
Sportsman & Ski Haus
Super 1 Foods
Superfeet
Sweet Peaks Ice Cream
Tea Kettle Cafe
The Toggery
Whitefish Bike Retreat

Whitefish Middle School

Whitefish Tree Service

ADOPT-A-TRAIL CREWS

Applied Materials
Averill Hospitality
Beyond the Boundaries
Eman & John Federico
Ethos Eco Boutique
Flathead Area Mountain Bikers
Grouse Mountain Estates
Montana Conservation Corps
Mountain Man Engineering
NW Montana Backcountry
Horseman

RE/MAX of Whitefish
Summit Preparatory School
Wheelie Creative Design
Whitefish Bike Retreat
Whitefish Mountain Resort

TRAIL VOLUNTEER GROUPS

Bill Love
Flathead Farmers 4-H Club
First Interstate Bank
Fresh Life Church
Jamie Moore
Ridge Mountain Academy
Whitefish Middle School

Whitefish Tree Service

GRANTS

Applied Materials Foundation
BNSF Railway Foundation
Flathead Conservation District
Katy Branstion Fun Fund
High Stakes Foundation
MT Noxious Weed Trust Fund
REI Stewardship Grant
Whitefish Community
Foundation - Great Fish
Challenge
Yellowstone to Yukon
Conservation Initiative



Anonymous Trailhead
Donations
Mark & Jean Abel
Terry & Linda Bell
Konrad Binder
Robert & Joann Blair
Dee Blank
Craig & Nancy Branigan
John & Jenny Branstion
Bright Funds
Broussard Charitable
Foundation
Ron & Jan Brunk
John Chaney
Marge & Ed Chianelli
Gordon & Katherine
Cross
Melanie & Trenton
Eckhardt
Donald Feldman &
Karen Burke
Andrew & Terry Feury
Flathead Community
Foundation
Mike & Patricia Frost
Hal Frutiger & Debbie
Rossetto
Goguen Family
Sallie & Alan Gratch
Charlie & Teresa
Grenier
Jan Haller
Ed Hannigan
Dennis Heinzig & Iona
McMillan
Paul & Mary Ianniello
Bill & Michelle
Krippaehne
Laabs Family
Steve & Amanda
Lietman
George Losleben &
Connie Johnson
Tim & Kathy McAughan
Paul & Janice McCann
Molly Miller & Mark
Jungerman
David & Emmy
Montanye
Karl & Carol Moody
Deb & Larry Myers
Jo-Ann & Kelly Panteluk
The RD Foundation
Hank & Susan Ricklefs
William Ryan
Schlinger Family
Foundation
Melissa Segil & Alex
Jopek
Lester & Kristin Stanley
Steve & Kathy Shuel
Charlie & Nancy Stone
Amy & Darren Swander
Whitefish Walkers



American Online Giving
Foundation
Rob & Kim Akey
Elise & Stefan Anderes
Dan & Laurie Averill
Pam & Joe Barberis
Duane & Valerie Bauch
Colin & Jen Baxter
James, Virginia, &
Rachel Bowland
Paul Burton
Brett & Lesa Church
Anne, Aaron, & Derek
Cisler
Chris Clouse
Chad & Rebecca Corah
Kim Corette
Andrew & Wendy Crites
Lindy Cubberley
Kate & Brian Daniels
Jimmy & Michaelan
DeHerrera
Signe & Jerry DeVall
Tom & Cindy Downing
Jim Dyck
Craig & Anna Easley
Elizabeth Saltonstall
John & Carol Ellis
Robert & Christine
Farrington
Courtney Feldt
Irene Feria & Jose Ness
John & Jennifer Flink
Rachel Fisherkeller
Laurie & Patrick
Fitzgerald
Carlos Garcia & Tara
Smith-Garcia
Kristin & Bryan Gardner
Glenda & Richard Gehri
Grassroots Lawn
Service
Green Family
Brandon & Colleen
Guest
Charlene & Mike
Gustafson
Barbara Gutschenritter
& Tom Caughlan
Kay & Bruce Haller
Chuck & Debby Hartle
Don & Betty Hawley
Tyler & Jessica Hoppes
Matthew Hoyne
Rob Imbeau
Kennedy/Jenks
Consultants
Frank & Ginny Larence
Marsh & Val Larimore
Walter & Melissa
Martin
Debbie Maue
Thomas & Christina
McClure
Bill & Devvi Morgan
Harry Morgan
Bruce & Melinda
Morison
Sam & Ruth Neff
George & Kristen Nix
David Noftsinger &
Michelle Nail-
Noftsinger
Richard & Edith O'Brien
John & Sue ODonnell
John Opatz & Laurie
Hedger-Opatz
Terry Orpen & Maureen
MacDonald

Larry & Valerie Parsons
Deborah Pero
Jey & Julie Ponti
Annie Pontrelli
Michael & Jael Prezeau
Kent & Lori Rauser
Misty Richmond
Donald & Amanda
Robinett
Alan Satterlee
Eric & Camisha Sawtelle
Robert J. Schumacher
Gary & April Seubert
Will & Bonnie Smith
Ted & Lisa Steiner
John & Laurel Swetnam
Terry & Carol Trieweller
Tupelo Grille
Marla Van Shaw
Michael & Ann Viscomi
Erik & Emily Weaver
Helen Weems
George & Melissa Wells
Steve & Linda
Wendfeldt
Mary & Hal Williamson
Eric & Linda Young
Linda Zimet



Mark & Lou
Albershardt
Scott & Jennifer
Alexander
Jeff Anderson & Karen
Nicoletti
Samuel Anderson
Cara & Mark Arehart
Tom Armbruster
Bruce & Joni Aronson
Cheri & Peter
Aronsson
Katherine & Ron
Bachrach
Steve Barrett
Danielle & Louis Barson
Randall & Anita Beach
Diane & Herb Bingham
Aimee Blinder
David Blumhardt
Erin & Noah Bodman
Barbara Boorman
Scott & Barb Brant
Tom & Debbi Browning
Larry & Marilyn Bruce
Paul & Penny Carpenter
Sue & Jim Carstens
Ada Casazza
John & Camile Catron
Craig & Debbie Clark
Clearwater Montana
Properties
Mo Cleary & Ernest
Moore
Kathy Colucci
Paul Conrad & Ellie
Johnson
Nancy Cronin
Chris Crumal & Vicki
Bernstein
Katherine Curtis
Lesley & Cliff Dales
Michael & Alana Darling
Linley Davis
Mark Davis & Mary
Curtis
Bruce Deitz
Chas Dense & Cristi
Herren
Rod DeVall

Caroline & David Dixon
Dominion Foundation
Nell Doyle
John Dulski
Randy & Louise Dunlop
Ned Dunn
Marilyn Eberly
Lauren Ellingson
Kevin Eichhorn
Enbankment, LLC
Lynn Exton
Kyle & Kimberly
Fedderly
Peter Fenger
Alan & Joyce
Ferrington
Quinn Fitzpatrick
Dan Frankino
Lindsey Gardner
Bob & Melissa
Genovese
Anne Gentry
Alan & Bethany Gnauck
Wanda Good
Nancy Goodwin
Miles & Jan Gordon
Martha & Joe Grieco
Dianne & Larry Grove
Greg & Catherine
Gunderson
Karen Gunderson
JD & Linda Gviazdon
Jason & Kristi Hanchett
John & Julie Hankinson
Tom & Stephenne Sue
Harding
Bill Haring & Carol
McSweeney
Naomi & Marlin Harris
James Hartshorne
Hap Haselden & Helen
Hindersman
Roger & Nancy
Herrington
Virginia Hillhouse
Russ & Linda Hobbs
Chris & Shannon Hoge
Holt Family
Kendra Hope
Jim & Penny Horner
Birgit Huffman
Laura Hunter
Imagination Station
Jerry & Marsha
Ingraham
Scott & Barbara Janni
Jared & Samantha
Kuhl
Diana Jennings
Emily Jense
Wayne & Yolande
Johansen
Claudine & Scott
Johnson
Sheila & Jay Johnston
Robert Jordan
Julie Steigler
Robin Kelson
Susan Kemp
Annie Kim
Betsy & Daniel
Kohnstamm
Ruth Kosmalski
Connie & Ken Kramer
Kathy Kruse
Dave Landstrom
Randy Leventhal
Stuart & Nina Levitt
Jennifer Lewis
Bill & Cathy Love
Phil McClellan
Patrick Madigan
Marianne Madler
John & Anne Maloney
Sarah Marbarger
Andrew Mazzullo
Mary McCarthy

Mike McClellan & Lisa
Jones McClellan
Ingrid McDonald
Bruce & Barbra McEvoy
Curt McIntyre
Ruth & Larry Menter
Barb & Matthew Merrill
Chris Merriman
Jan & Pete Metzmaker
Paul Miller & Joana
Valentino
Cecilia Mink
Theresa Mooney
Jeanine Morreim
Michael & Wanda
Morton
Patrick Muri
Barbara Myers
Tom Nogay
Leigh & Dana Nunn
Rod Olsen
Jessie Opel
Kelly Ordway
Marvin Parker
Jean Parodi
Sara & Dwight Parr
Drew Paslawsky & Kim
Sands
Lori Penzi
Roberta Perry
Philip & Lori Barton
Mike & Sharon
Poehling
Riley Polumbus
Al & Natalie Priebe
Gerda Reeb
Vicki Reich
Mark Reinsel
Sue Robison
Link Neimark
David & Stephanie
Rohrer
Roger Rowles &
Valerie Konnerup
Susie Ruffatto
Ian Sanchez
Tom & Jen Sato
The Schroeder Family
Ann Marie and Martin
Sears
Scott Senger & Kay
Compton
Sheila Ann Shapiro
Jane & George Shryock
Kate Siddall
Roger & Luann Sievers
Katherine Sivanish
Bob & Glenda Smith
Kenneth & Susan Smith
Heidi Stamm
Christine Stewart
Brian & Gail Sullivan
Ann Swanson
Stuart & Joyce
Swenson
James Sylvanus
& Melisa Evangelos
Eric & Stephanie Taylor
Janis Taylor
Naomi Taylor
Cheryl & Gary Tillemans
Jo Ann & Mark Tracy
Rick & Jan Ulvin
Chuck & Stacie Vanover
Regina Ving
Tom Gilfillan
Matthew & Jillian
Wermling
Laura Whittemore
Lawrence & Cindy
Whittington
Randell Wiens
Trisha Wolf
John & Lorrie Woods
Jivan Zeisse
Charles & Shaya
Zucker



AGL Foundation
Summerfield & Julie
Baldridge
Dick & Sandy Boyce
High Stakes
Foundation
Flathead Community
Foundation
Kiita Foundation
Krumholz Fund
Molly & Tobin Hoppes
Tyler & Jessica Hoppes
Mike & Lindsey
Hromadka
Melissa Hulvat & Pierre
Kaptanian
Darrell & Alison Jones
Fred & Sarah Jones
Doug & Carolyn Kohrs
Mark & Ashleigh Magill
Paul & Janice McCann
Shane McMillen &
Sarah Canepa
John & Alison Means
Schlinger Family
Foundation
Dennis & Shane Steger
Richard & Susan
Williams
Whitefish Community
Foundation - Great
Fish Challenge
Randall & Kristin
Zuckerman



Paul & Wendy Faganel
Goguen Family
Charlie & Teresa
Grenier
Richard & Suzanne
Hildner
Rhona & Jerry Meislik
John Muhlfeld &
Stephanie Sunshine
Robert & Margaret
Stevens
Karen Van Howe
Whitefish Legacy
Partners



Katy Brantson
Amy Derin
James Howe
Sam Penzi
Peter Stanley





Whitefish Legacy Partners
PO Box 1895
Whitefish, MT 59937
May 2019



BE A 2019 WHITEFISH
TRAIL FRIEND

Donate Today

