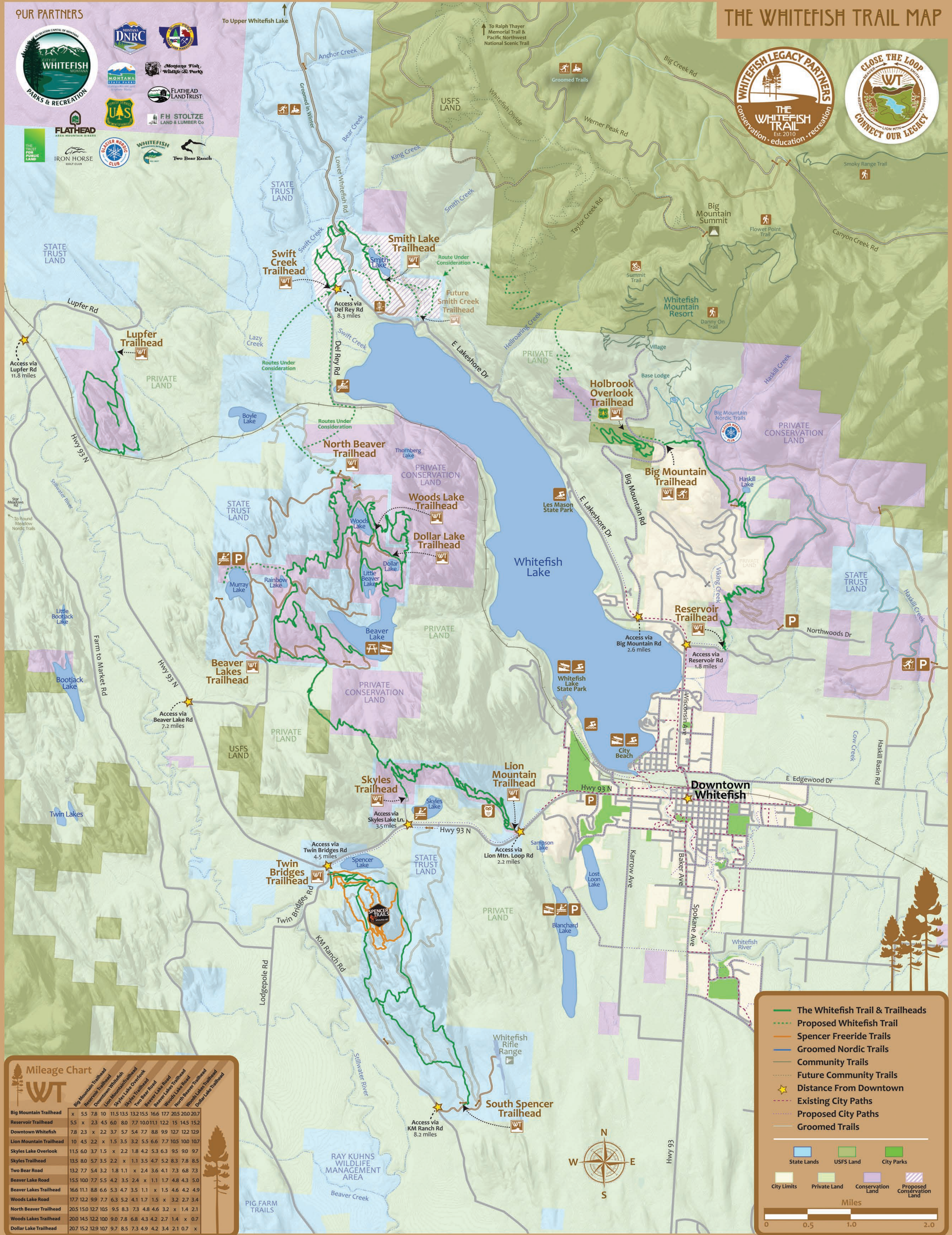


OUR PARTNERS



THE WHITEFISH TRAIL MAP



Mileage Chart

	Big Mountain Trailhead	Reservoir Trailhead	Downtown Whitefish	Lion Mountain Trailhead	Skyles Trailhead	Two Bear Road	Beaver Lake Road	Beaver Lakes Trailhead	Woods Lake Road	North Beaver Trailhead	Woods Lakes Trailhead	Dollar Lake Trailhead
Big Mountain Trailhead	x	5.5	7.8	10	11.5	13.5	15.5	16.6	17.7	20.5	20.0	20.7
Reservoir Trailhead	5.5	x	2.3	4.5	6.0	8.0	7.7	10.0	11.1	12.2	15	15.2
Downtown Whitefish	7.8	2.3	x	2.2	3.7	5.7	5.4	7.7	8.8	9.9	12.7	12.9
Lion Mountain Trailhead	10	4.5	2.2	x	1.5	3.5	3.2	5.5	6.6	7.7	10.5	10.7
Skyles Trailhead	11.5	6.0	3.7	1.5	x	2.2	1.8	4.2	5.3	6.3	9.5	9.0
Two Bear Road	13.5	8.0	5.7	3.5	2.2	x	1.1	3.5	4.7	5.2	8.3	7.8
Beaver Lake Road	15.5	7.7	5.4	3.2	1.8	1.1	x	2.4	3.6	4.1	7.3	6.8
Beaver Lakes Trailhead	16.6	11.1	8.8	6.6	5.3	4.2	3.5	x	1.1	1.7	4.8	4.3
Woods Lake Road	17.7	12.2	9.9	7.7	6.3	5.2	4.1	1.1	x	1.5	4.6	4.2
North Beaver Trailhead	20.5	15.0	12.7	10.5	9.5	8.3	7.3	4.8	4.6	x	3.2	3.4
Woods Lakes Trailhead	20.0	14.5	12.2	10.0	9.0	7.8	6.8	4.3	4.2	3.2	x	0.7
Dollar Lake Trailhead	20.7	15.2	12.9	10.7	9.7	8.5	7.3	4.9	4.2	3.4	2.1	x

Legend

- The Whitefish Trail & Trailheads
- Proposed Whitefish Trail
- Spencer Freeride Trails
- Groomed Nordic Trails
- Community Trails
- Future Community Trails
- Distance From Downtown
- Existing City Paths
- Proposed City Paths
- Groomed Trails

Land Ownership

- State Lands
- USFS Land
- City Parks
- City Limits
- Private Land
- Conservation Land
- Proposed Conservation Land

Scale

0 0.5 1.0 2.0 Miles

Legacy Sponsors

Our most important partner is YOU!

This is a community supported multi-use, non-motorized trail system. It is made possible by our donors, volunteers, and partners.

GIVE BACK

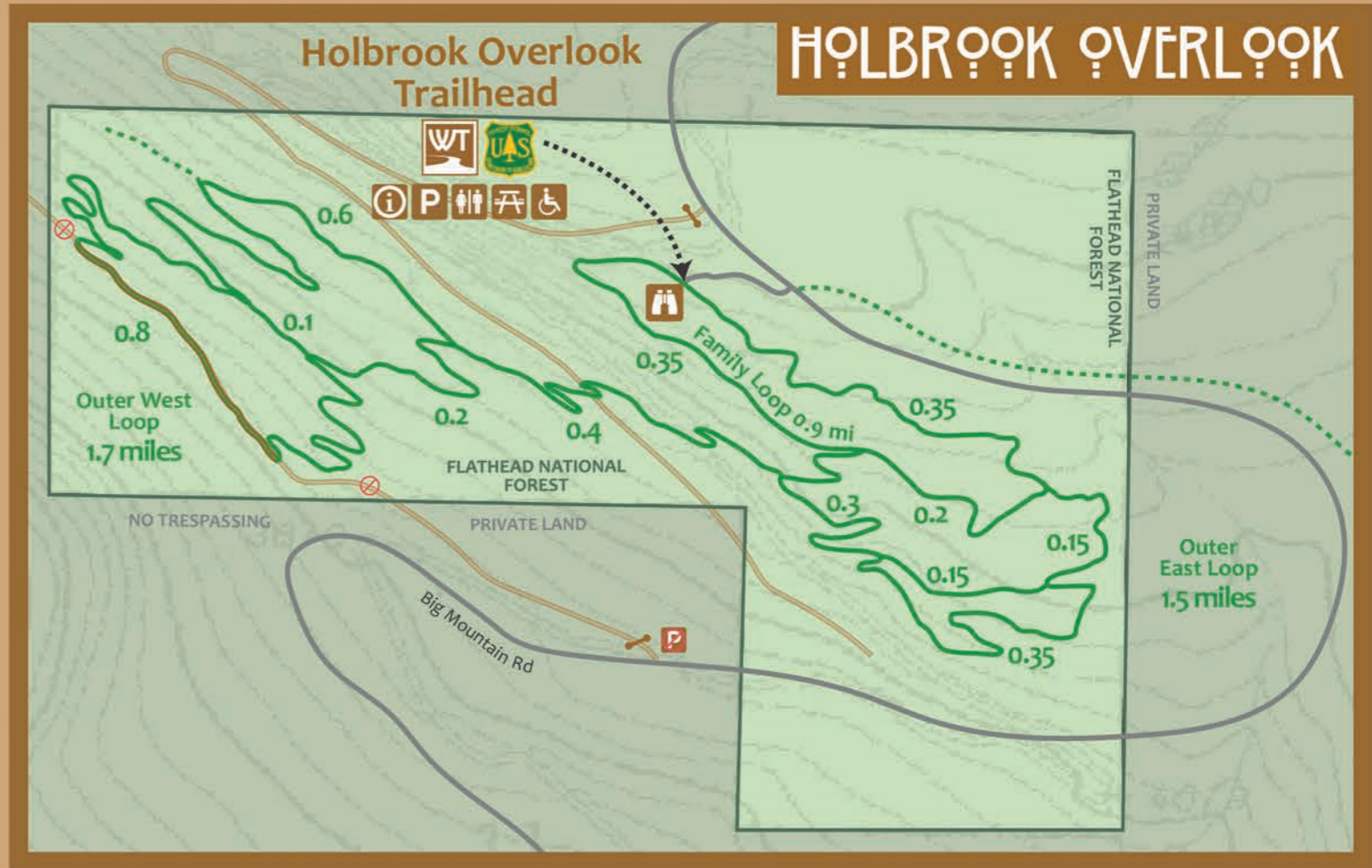
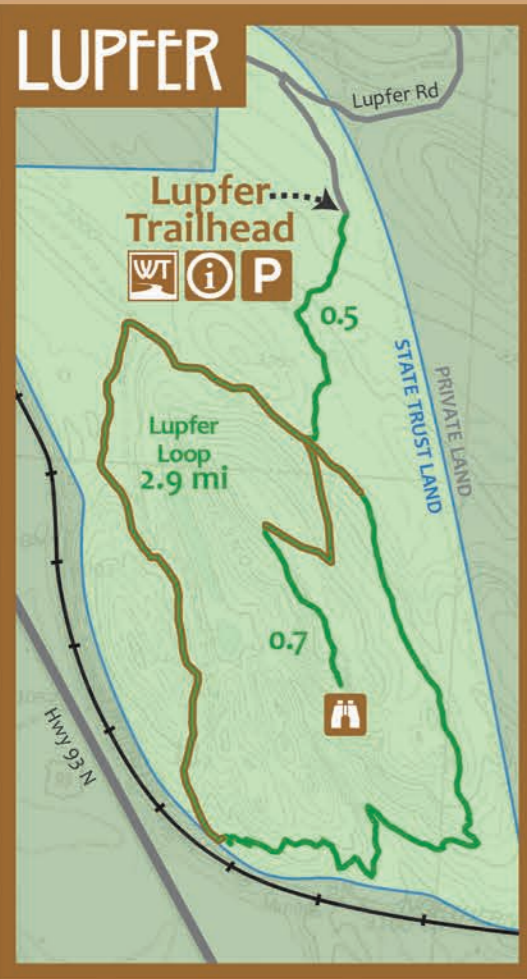
Be a Whitefish Trail Friend or Family!

The Whitefish Trail pays for your right to recreate here. Your donation is critical to our success.

Give back and donate today.

www.whitefishlegacy.org

Founding Sponsors



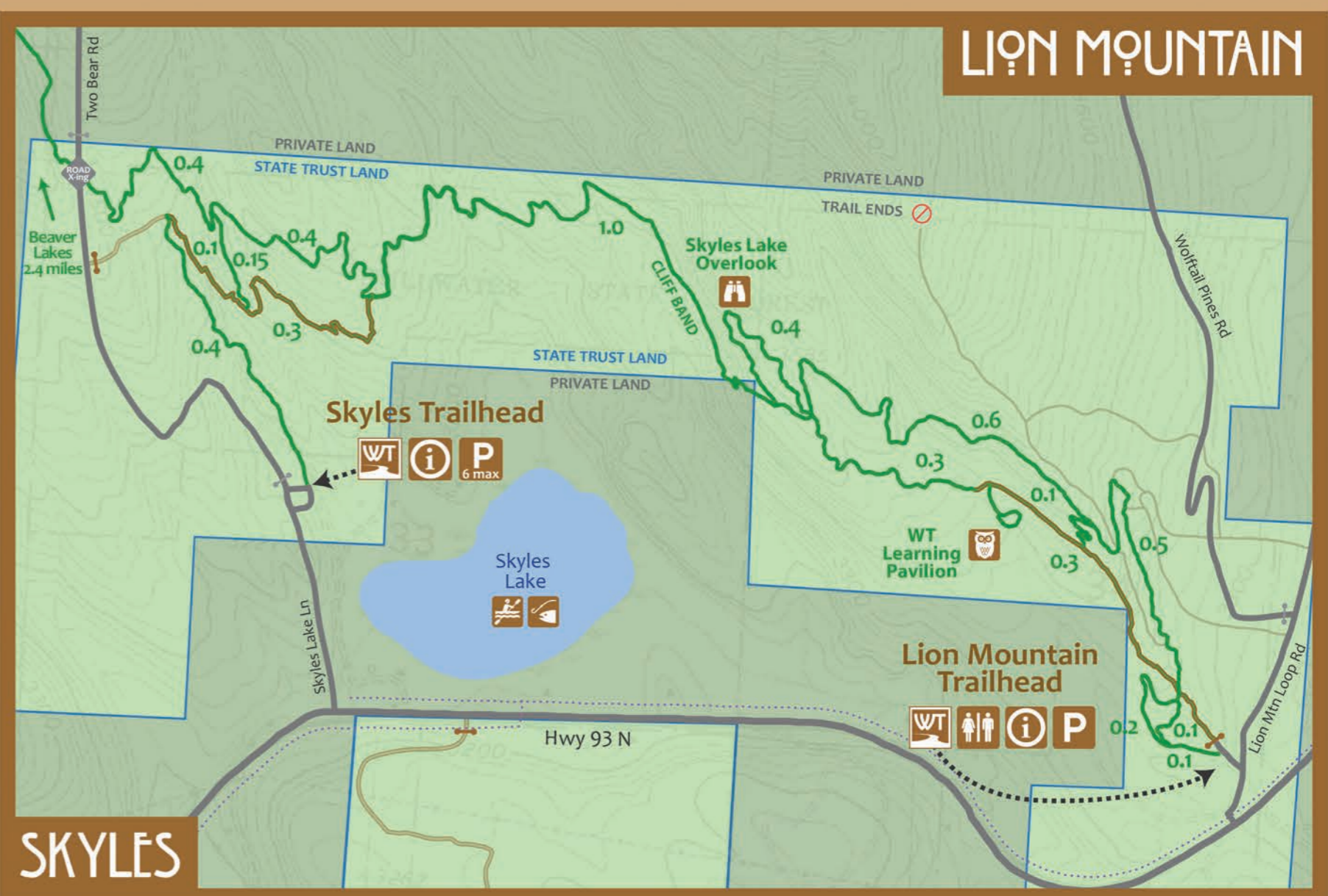
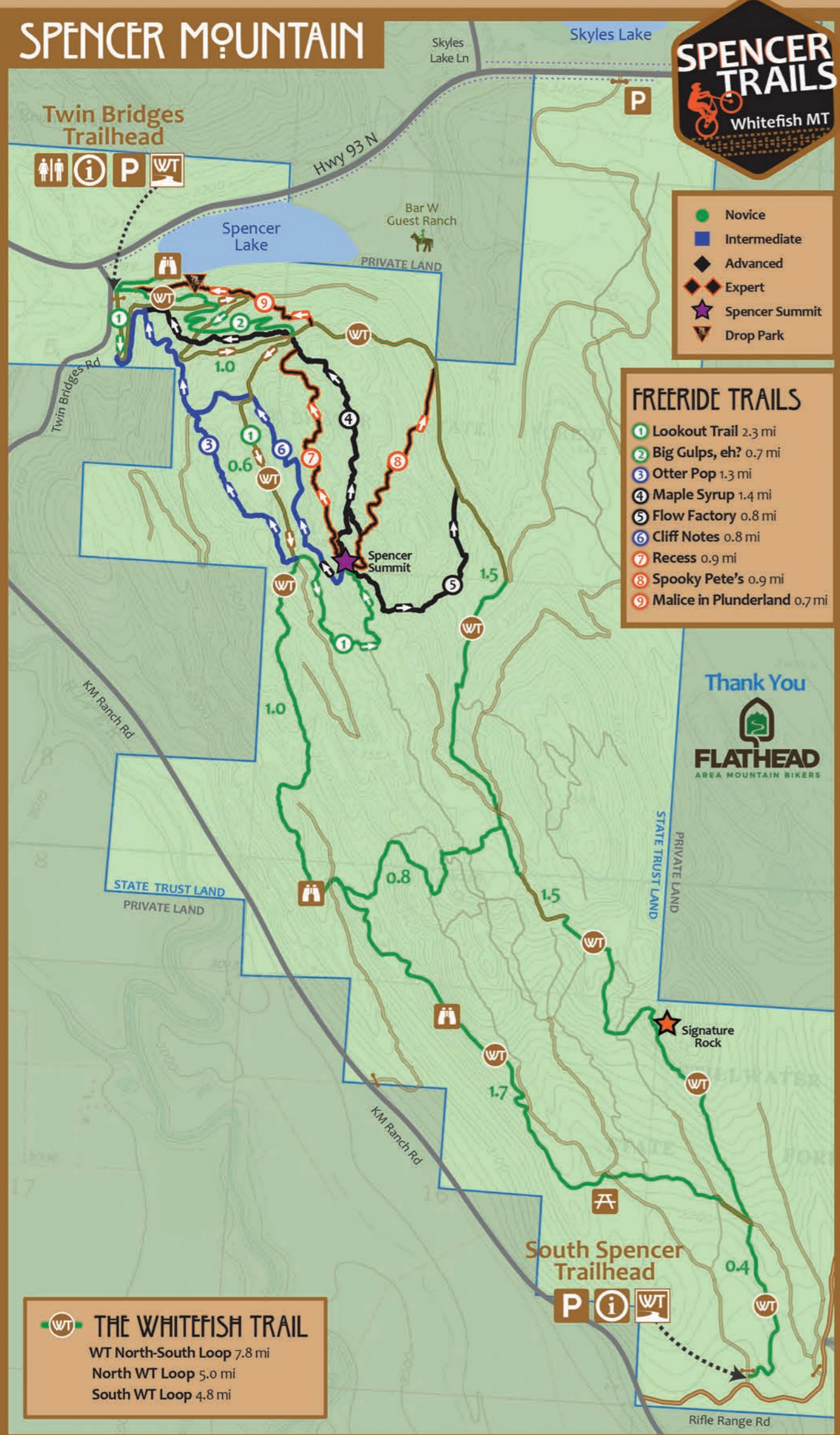
conservation education recreation

THE WHITEFISH TRAIL

- The Whitefish Trail
- Whitefish Trail On Road
- Proposed Whitefish Trail
- Proposed City Path
- Paved Road
- Logging Road
- Gated Logging Road

Trailhead Viewpoint Restroom
Information Kiosk Parking Wheelchair Accessible Trail

For trail conditions, recommended outings and accessibility information visit www.whitefishlegacy.org/trailguide



outside kind.
FLATHEAD VALLEY

No matter how you enjoy our local trails, do it with kindness.

be considerate.
Be aware of how your actions impact others. Multi-use trails are for everyone, so respect the experience of others. Take a moment to say 'hi' to fellow users - it can make a big difference in someone's day, and that someone could be you!

be safe.
Safety first! Regardless of how you're using the trail, keep yourself and your group safe. Always carry bear spray that is easily accessible and know how to use it!

be inclusive.
Our trails are for everyone! Remember, everyone started as a beginner. So no matter your skill level, be welcoming and encouraging to new trail users.

leave no trace.
Always pack out your trash and help by picking up any you find. Stay on designated trails and never cut corners or switchbacks.

learn more at www.outsidekind.org/flathead