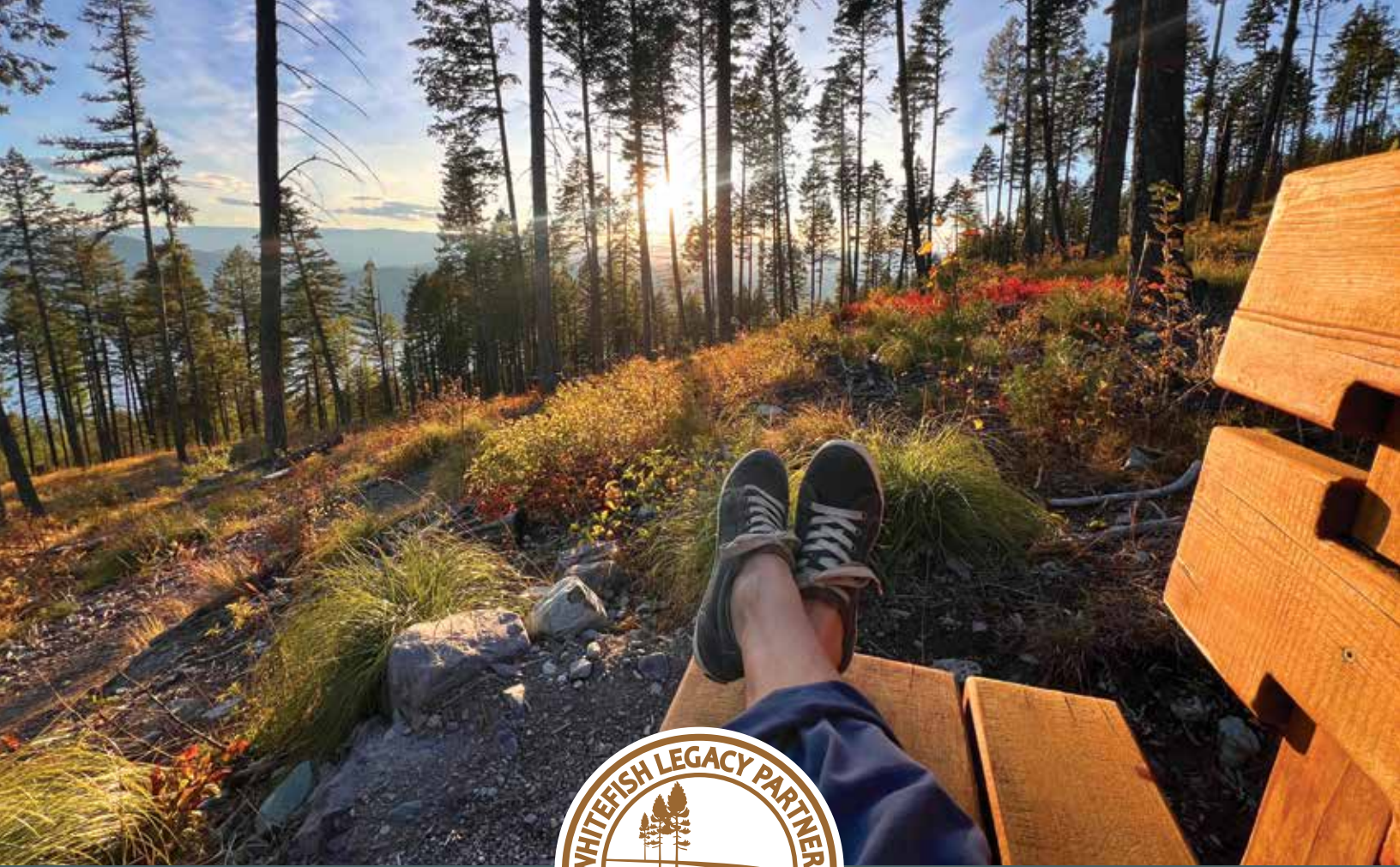




Annual
COMMUNITY REPORT
2025



Dear

Friends and Supporters,

Legacy lives in the trails we care for, the places we protect, and the people who steward them year after year. This past year marked a pivotal time for Whitefish Legacy Partners as we took an important step toward securing our legacy.

With the acquisition of the former Whitefish Bike Retreat, we began creating the Whitefish Legacy Center, a permanent home for conservation and the community. Located in the Beaver Lakes area and adjacent to protected lands, this 35-acre property will become the new home for outdoor education and the heart of the Whitefish Trail. The Legacy Center brings recreation, education, and community together in one welcoming place.

This project is the fullest expression of our mission. It represents thoughtful, responsible growth and a long-term investment in infrastructure and people, strengthening our ability to serve the community and support the next generation. Your belief in our work has made this project possible.

As we look ahead to a summer 2026 opening, we do so with care and intention. Thank you for your trust and commitment to protecting the lands we love and ensuring access for generations to come.

Reid Sabin, Board Chair



Mission

Whitefish Legacy Partners is a nonprofit organization whose community-minded vision ensures conservation, recreation, and education on the lands around Whitefish for future generations.



CONSERVATION

We work to conserve important landscapes— forests, wildlife habitat, clean water, and scenic views—to prevent incompatible development and maintain public access.



RECREATION

We connect conserved lands with recreation opportunities accessible to locals and visitors on the Whitefish Trail.



EDUCATION

We foster connection, understanding, and long-term stewardship through community engagement and outdoor education.

A NONPROFIT PROTECTING LOCAL LANDS



WHITEFISH LEGACY CENTER

BIG NEWS!

Whitefish Legacy Partners is proud to introduce the Whitefish Legacy Center— a 35-acre gathering place and the new heart of the Whitefish Trail, where community takes root today, and together we continue our conservation legacy for generations.



Conservation

WE WORK TO CONSERVE IMPORTANT LANDSCAPES—
FORESTS, WILDLIFE HABITAT, CLEAN WATER,
AND SCENIC VIEWS—TO PREVENT INCOMPATIBLE
DEVELOPMENT AND MAINTAIN PUBLIC ACCESS.



Smith Lake Legacy—8-Year Quest Pivots

For years, we focused on conserving Smith Lake at the head of Whitefish Lake. After big community wins from Beaver Lakes to Haskill Basin—while generating millions for Montana’s schools and universities—we hoped to have another success in 2025. Despite our best efforts to negotiate a fair price, the DNRC’s non-negotiable \$18 million gap made the project unfeasible. It is deeply disappointing that Smith Lake and Swift Creek will not become the community legacy we envisioned, and the decision to pivot was not easy. We are now focusing our efforts to secure permanent trail easements and advance other conservation and recreation projects that will benefit the community for years to come.

Trail Easements

We are optimistic and committed to trail connectivity at Smith Lake and continue to work to ‘Close the Loop’ of the Whitefish Trail—on public land and with private landowners. We are seeking trail easements from the State to permanently connect Swift Creek to Smith Lake with loop trails and family-friendly recreation opportunities. Completing the community’s vision for a loop trail around Whitefish Lake continues to be our priority.

Introducing the Whitefish Legacy Center

We acquired a 35-acre parcel in the Beaver Lakes area as the future site of the Whitefish Legacy Center. The property was slated for a 90+ unit development. Through this strategic purchase made possible through the generous support of a small group of legacy donors, we prevented incompatible development and will honor the community’s long-held commitment to open lands, recreation, and outdoor education. The Legacy Center is surrounded by 1,520 acres of Montana School Trust Lands we conserved and protected together in 2014.

Opening summer 2026, the Whitefish Legacy Center will serve as the new heart of the Whitefish Trail—a destination for outdoor education, community connection and gatherings, and continued stewardship with a strong focus on conserving our shared, protected lands. By re-vitalizing the property for improved public access and repurposing the existing buildings, we will expand outdoor education, recreation, and conservation programs at our new home.



As we begin a new chapter of private stewardship at the Whitefish Legacy Center, we do so with gratitude for the Salish, Kootenai, and Pend d’Oreille people. We acknowledge these lands are a part of traditional homelands, and we recognize the deep and ongoing connection and care across countless generations. We commit to caring for this land and helping future generations understand its natural and cultural history as we work to deepen our understanding of this place and our role within it.



Recreation

WE CONNECT CONSERVED LANDS
WITH RECREATION OPPORTUNITIES
ACCESSIBLE TO RESIDENTS AND LOCALS
ON THE WHITEFISH TRAIL.



Rainbow Connection

The Whitefish Trail was extended to Murray Lake, bringing the trail system to 49 miles accessed by 15 trailheads. The 1.6-mile trail crosses rolling terrain, includes a 360° overlook with a WT bench, and connects Rainbow Lake to Murray Lake—making it easier for families and trail users to include Murray Lake in their adventures on the Whitefish Trail in Beaver Lakes.

Thanks to Whitefish Chiropractic for sponsoring the overlook bench and helping make this project a success. Thank you also to the families who sponsored trail markers to support construction and long-term maintenance. As grant funding for new construction becomes more limited and competitive, we're especially thankful for all our local donors. Visit whitefishlegacy.org/ways-to-donate to learn how you can support the Whitefish Trail.

Whitefish Resort Tax

Starting in 2025, a percentage of the City of Whitefish's Resort Tax began supporting Whitefish Trail operations and maintenance thanks to voter support to fund additional community projects that provide broad community benefit. Funds supported two major projects on the Whitefish Trail—Lower Haskill and South Spencer.

The lower Reservoir Trail switchbacks in Haskill were improved with better turn geometry, reinforced tread, and stabilized backslopes. The South Spencer project rerouted a severely eroded fall line trail with sustainable switchbacks and improved drainage to enhance user experience and reduce future erosion. Thank you Whitefish and Resort Tax funding.

Close the Loop



Planning and trail design completed in 2025 with our community recreation partners advanced our 'Close the Loop' efforts in the Taylor–Hellroaring area. New trail will be built in partnership with Whitefish Mountain Resort, connecting the Big Mountain Trailhead to the top of the Heritage T-Bar, then descending toward Hellroaring Creek and across Hellroaring Basin on Flathead National Forest lands toward Smith Lake. This new trail will link to additional Taylor–Hellroaring trails being constructed by Flathead Area Mountain Bikers as they work from the ridge trail down into the Hellroaring Basin. 2026 is shaping up to be a big year as we continue working to Close the Loop of the Whitefish Trail.





Education

WE FOSTER CONNECTION, UNDERSTANDING,
AND LONG-TERM STEWARDSHIP THROUGH
COMMUNITY ENGAGEMENT AND
OUTDOOR EDUCATION.





There is more in us than we know if we could be made to see it; perhaps, for the rest of our lives we will be unwilling to settle for less. - Kurt Hahn



Community Outdoor Education

What a year for outdoor learning on the Whitefish Trail! Whitefish Legacy Partners saw significant growth in 2025 with the addition of our first full-time Education Coordinator. The number of outdoor education programs increased by 34% with 29 additional programs added. Program participation increased by 42% with 2,048 total individuals served. Free field trips for local schools increased by 110%; WLP hosted 21 field trips, reached 11 different schools across the Flathead Valley, and provided transportation for 10 trips.

Where Learning Takes Root

The acquisition of the Whitefish Legacy Center means we are dreaming BIG for the future of outdoor education! The Whitefish Legacy Center will become home base for our education programs, providing inclusive, enriching, and affordable learning opportunities for the Flathead Valley. We aspire to build an open-air pavilion as the primary gathering place for outdoor education programs with future plans to host year-round events for all ages.

A Place to be Outdoors Together

We all seek meaningful ways to feel connected—to ourselves, to one another, and to the world around us. Our hope is to nurture connections by bringing people together outdoors. By gathering in nature, we create space to share experiences, discover common ground, and celebrate the beauty that surrounds us. Together, we cultivate a sense of belonging and inspire one another to become lifelong learners and stewards of the remarkable place we call home.



VOLUNTEER OF THE YEAR

Seth King isn't just a volunteer—he's part of the heart of our community. Many know him for his support of the Whitefish Trail Blazer, and his impact goes far beyond race day. From education programs to community events, Seth always shows up for the Whitefish Trail and our community. Through the running clubs he organizes to the energy he brought to the Holiday Stroll, Seth brings people together and embodies true volunteer spirit. As he says, "Community is everything to me—growth, laughter, learning, friendship, and family." Thank you, Seth King!



Events

CELEBRATE THE TRAIL THROUGH THE SEASONS

Each year, Whitefish Legacy Partners hosts a series of community events celebrating the Whitefish Trail and raising vital funds for our programs and operations.

In 2025, these events continued to grow in participation and impact:



SPRING: Hit the Trail Challenge



The annual Hit the Trail Challenge runs through the month of May and inspires our community to get outside and be active. Participants log their miles on the Whitefish Trail, with each mile generating a donation from sponsors. In May 2025, 28,595 miles were hike, biked, and run thanks to hundreds of individuals, workplace teams, and Whitefish Middle School students. The Challenge brings our community together for active living and celebrates our local trail system. In 2026 our goal is 30,000 miles!

SUMMER: Whitefish Trail Hootenanny



The 15th annual Whitefish Trail Hootenanny drew nearly 1,500 people to Depot Park for an unforgettable night of live music, food trucks, local brews, and dancing. Performances from great bands kept the crowd moving, while kids enjoyed the bike obstacle course and art zone. A stacked raffle featuring prizes including Alaska Airlines tickets, a WMR season pass, and a mountain bike added to the excitement. See you on August 21, 2026!

Sponsor OF THE YEAR



We are proud to recognize Flathead Running Company, FRC, as Whitefish Legacy Partners' 2025 Sponsor of the Year. In 2025, FRC became the first Presenting Sponsor of the Whitefish Trail Blazer with a 5-year commitment. Located in downtown Kalispell, FRC is a specialty running store serving runners, walkers, and outdoor enthusiasts across the Valley. Under the ownership and leadership of Casey Jermyn, the business reflects strong local roots and a deep



FALL: Whitefish Trail Blazer



The 2025 Whitefish Trail Blazer solidified its reputation as one of the region's premier trail running events. Saturday's 50K drew a record field, and the winner shattered the previous course record, finishing nearly 20 minutes faster than 2024's top time in an impressive 4 hours.

The momentum carried into Sunday's Beaver Lake events, where the half marathon, 10K, 5K, and family fun run welcomed participants of all ages and abilities. Together, the weekend was a celebration of community and supported a great local asset, the Whitefish Trail. We can't wait to see what 2026 brings on October 3 & 4.

Looking Ahead!

2025 marked a strong year for our local events, and with the Whitefish Legacy Center, we're ready to expand and elevate our community gatherings in meaningful ways. As the Legacy Center comes to life, we look forward to introducing new events to bring people together to gather, explore, and connect.

In upcoming years, we will offer a multitude of educational programs geared towards youth and adults alike in our community. Plans also include hosting special events, live music, and workshops/trainings that promote learning, recreation, and community building. Over time, our hope is that the Legacy Center will grow into a vibrant community hub that serves as a lasting resource for the Whitefish area.

For more information on upcoming events, visit whitefishlegacy.org/events.

commitment to building community through the sport of running. As the WT Blazer Presenting Sponsor, FRC provides stability and confidence as we plan and grow in the years ahead.

We are deeply grateful for Casey's leadership and for the entire FRC team. To learn more about WLP's sponsorship opportunities and how you can give back to the community, visit: whitefishlegacy.org/ways-to-donate.



At Flathead Running Company, the trails are a big part of why we love what we do. Working with Whitefish Legacy Partners has been incredibly meaningful because they help protect and maintain the

places where our community runs, explores, and connects. ~ Casey Jermyn, Flathead Running Company



Financials



WHITEFISH LEGACY PARTNERS ANNUAL OPERATIONS & PROGRAMS

Fiscal Year ending December 31, 2025

Whitefish Legacy Partners' programs support conservation, recreation, education, fundraising, and community outreach and are the backbone of the organization. Six dedicated, paid staff lead the efforts to accomplish the community's vision with guidance and leadership from a 14-person volunteer Board of Directors.

Revenue

Grants	\$20,671
Great Fish Community Challenge	\$191,306
Corporate Sponsors	\$62,145
Contributions:	
Friends & Families	\$45,836
Major Donors	\$132,168
Events & Merchandise	\$153,391
Programs	\$48,108
Previous Year Investment	\$22,230
Total	\$675,855

Expenses

Conservation Programs	\$120,438
Education Programs	\$137,248
Recreation Programs	\$153,750
Professional Services	\$42,002
Fundraising	\$72,948
Community Outreach	\$83,353
Administration	\$38,413
Total	\$648,151

Future Investments-2026 Programs

\$27,704

Non-Cash Contributions

Volunteer Labor	\$52,653
In-Kind Goods & Services	\$26,977
Total	\$79,630



FISCAL SPONSORSHIP

Fiscal Year ending December 31, 2025

Flathead Trails Association is a community collaborative dedicated to strengthening outdoor recreation connections across the Flathead Valley. FTA unites and amplifies local recreation nonprofits and agencies through strategic partnerships and coordination. In 2025, FTA was awarded a Community Collaborative Capacity Grant from the National Forest Foundation to establish a unified vision for community connectivity and long-term trail stewardship.

Revenue

Grants	\$15,557
USFS	\$20,000
Non-profit Partners	\$10,879
Corporate Sponsors	\$4,350
Total	\$50,786

Expenses

Volunteer Training & Programs	\$4,957
FTA Map	\$1,500
Trails Fest	\$950
Strategic Planning	\$2,000
Professional Services	\$31,500
Administration	\$1,626
Total	\$42,533

COMMUNITY CONSERVATION

WLP's community-driven conservation projects remove development rights, protect open space and public access in perpetuity, and create high-quality recreation opportunities.

\$27 MILLION INVESTED SINCE 2014

- **2014:** protected 1,520 acres in Beaver Lakes
- **2016:** protected 3,022 acres in Haskill Basin securing the City's drinking water
- **2025:** purchased 35 acres of private land adjacent to Beaver Lakes and established the Whitefish Legacy Center

FUTURE

Conservation Reserves	\$627,103
Private Donations - Whitefish Legacy Center	\$53,000
Private Donations - pledged	\$950,000

Fiscal Year ending December 31, 2025

THE WHITEFISH TRAIL

ANNUAL PROJECT

WLP fundraises each year to support new construction and operations and maintenance on the Whitefish Trail.

NEW CONSTRUCTION

Rainbow Connection & Close the Loop Planning

Revenue	
Grants	\$41,300
Private Donations	\$15,243
Total	\$56,543

Expenses

Planning & Design	\$5,038
Trail & Amenities Construction	\$51,509
Total	\$56,547

OPERATIONS & MAINTENANCE

Revenue	
Grants	\$37,000
Partner Contributions:	
Glacier Nordic Club - Big Mtn. Trailhead	\$2,972
Flathead Area Mtn. Bikers - Spencer Mtn.	\$10,054
USFS Flathead National Forest	\$16,988
City Resort Tax	\$59,500
WT Endowment Distribution	\$60,000
Private Donations	\$1,362
Total	\$187,876

Expenses

Operations	\$32,152
Maintenance	\$153,964
Total	\$186,116

Annual WT budget is managed collaboratively with the City of Whitefish

IN-KIND SUPPORT

Whitefish Legacy Partners	\$42,002
Volunteers	\$41,403
City of Whitefish, Parks & Recreation	\$4,500
Flathead Area Mountain Bikers	\$1,231
Professional Services & Contractors	\$4,083
Total	\$93,219

TOTAL PROJECT 2010-2025

The Whitefish Trail opened in 2010 at Lion Mountain with new sections added year after year. Initial investments from community-minded donors enabled Whitefish Legacy Partners to secure Montana's largest Recreational Trails Program grant for a project of regional significance. Annual contributions continue to support and expand the Whitefish Trail.

FUTURE PROJECTS

2026-2030



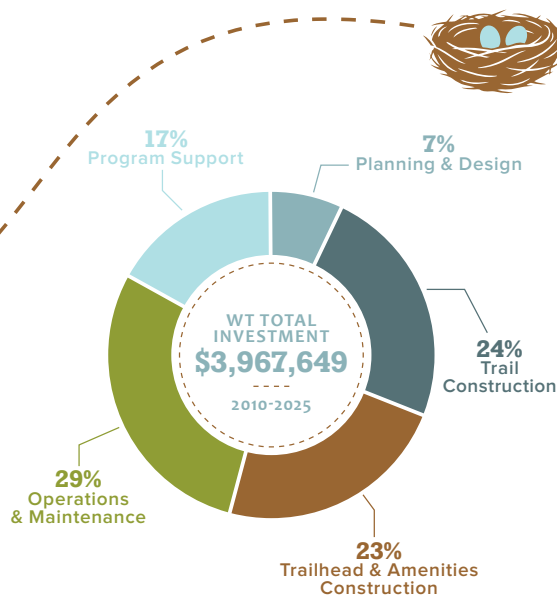
WLP invests in the future of the Whitefish Trail through strategic planning and careful fiscal stewardship. Ongoing trail maintenance, operations, and management are supported by donations, the Whitefish Trail Endowment Fund, and City of Whitefish Resort Tax allocations. New trail construction is funded each year through grants and donations. Upcoming projects include linking Haskill to Hellroaring Basin (2026-2028), expanding Smith Lake (2026-2030), and connecting Hellroaring Basin to Smith Lake (2030). These projects will 'Close the Loop' of the Whitefish Trail.

OPERATIONS & MAINTENANCE

Reserves - Private Donations	\$21,439
WT Endowment Annual Distribution	\$63,000
City Resort Tax - projected	\$150,000
Total - Annually	\$234,439

NEW CONSTRUCTION

Reserves - Private Donations	\$87,793
Grants - secured - 2025-2027	\$213,500
Total	\$301,293



LEAVE YOUR LEGACY!



Whitefish Legacy Partners has established two Montana-accredited charitable endowments with the Whitefish Community Foundation. The first, created in 2011, safeguards the long-term health of the Whitefish Trail funding maintenance in perpetuity. The second was established in 2025 to ensure the sustainability of the Whitefish Legacy Center. The Montana Endowment Tax Credit allows donors to pay less in state income taxes and forever benefit the Whitefish Trail or Whitefish Legacy Center.

www.whitefishlegacy.org/ways-to-donate

WHITEFISH TRAIL
ENDOWMENT BALANCE:

\$1,593,757
as of December 31, 2025

WHITEFISH LEGACY CENTER
ENDOWMENT BALANCE:

\$30,000



Support

Thank you for supporting conservation, education, and recreation in our community!

2025 TOTALS

TOTAL RAISED
\$153,606

TOTAL DONORS
337

NEW DONORS
109



Jen & Troy Adams
Anonymous
Michael & Kathleen Bailey
Summerfield & Julie Baldrige
Tom & Louise Bannigan
Roger Barber & Mary VanBuskirk
Jon Battle
Duane & Valerie Bauch
Amanda Belleville & Brady Lockhart
Trevor Berg & Mitra Lohrasbpour
John Bertram
Dee Blank
Tom & Carrie Bowman
Dick & Sandy Boyce
Alex & Terri Boyer
Craig & Nancy Branigan
Laura & John Brickley
Bristol-Meyers Squibb Foundation
Broussard Charitable Foundation
Bill Carpenter
Maureen Casey
Rich Castor
John Chaney
Marge & Ed Chianelli
Don & Sally Clark
Alicia Coghlan
Kim Corette
Lindy Cubberley
Gary & Annell Danczyk
John & Patsy Davis
Tom & Cindy Downing
Kate & Ross Dworman
Melanie & Trenton Eckhardt
Lori Faison
First Interstate
BancSystem Foundation
Laurie & Patrick Fitzgerald
Paul & Meagan Flannigan
Laurel Frazer
Brandon & Colleen Guest
Daphne Hall & Steve Kelly
Jan Haller
Arden Hoffman
Chad & Lindsay Hudson
Noel Huettich
Leslie & Will Hunt
Doug & Kristen Johanson
Keii Johnston & Carrie Jacobsen
Kalpakis Family
Bradley & Melissa Kent
Philip & Lisa Kepler
Brian & Deborah Krueger
Shahana Larson
Stephen & Kerrilyn Latter
Virginia Lazenby
Hikmat Maaliki
Macquarie Group Limited
Christine McKenney
Rhona Meislik
Molly Miller & Mark Jungerman
Carol & Karl Moody
Anna Maria Motta
Christina Murray
Joe Mushel
Lynn & Anders Myhran
George & Kristen Nix
Jules Olson

William & Marcia Pade
Karen Paul
Hunter Pauley
Kim Pearce
Lori Penzi
Carole Peschel
The Povich Family Foundation
Brooks & Lila Preston
Robert Richardson
Hank & Susan Ricklefs
Sue Robison
David & Stephanie Rohrer
Ernest Rouse
Stacy Rudnicki
Scott & Madelyn Russell
Tom & Jen Sato
Sheril Schenck
Larry & Kathy Schnuck
Robert Schumacher
Toby Scott
Lara & Peter Shortall
Doug Smith & Candace Shaeffer
Preston & Marjorie Spencer
Roger & Carole Spragg
Henry & Beth Stamm
Dennis & Shane Steger
Charlie & Nancy Stone
Stanley & Jeanne Strathman
Rick Sullivan
Nancy & Jesse Thompson
Kiersten Todt
Daniel Tonkovich
James & Toni Turner
Alberto & Stacey Valner
Heidi & Mark Van Everen
Robert A Waller Foundation
Daniel White
Laura Whittemore
Rick & Sue Williams
Heggie & Julie Wilson
c/o Sandhill Family Fund
Doug & Bet B. Wise
Kristin Yandora & John Amick



Koel & Lazette Abell
Danielle Algeo
Amgen
Shelby Baldrige
Kara Bank
Al & Karen Bates
David & Mary Blumhardt
Larry & Molly Bruce
John & Brenda Dulski
Dixie Eppink
CJ & Mark Finnical
Mike & Patricia Frost
Carlos Garcia & Tara Smith-Garcia
Kristin & Bryan Gardner
Heidi Gillenwater
Eric & Kari Greenberg
Catherine Hetrick
Chris & Shannon Hoge
Kaye & Bruce Haller
Luke Johnson
Murray & Deborah Knetchel
Stephanie Krick
Frank & Ginny Larence

Bill & Kristi Jo Lynn
Kit Marsden
Jeanine Morreim
Rick & Laurie Murphy
Lauren Myrick
Sam & Ruth Neff
Doug & Allison O'Briant
Scott & Amy Olson
Annie Pontrelli
Beth & Will Saltonstall
Tom & Jen Sato
Steve & Kathy Shuel
Eric Sjoden & Teri Balaska
Corky & Jan Smith
Richard Steed
Scott & Ann Stone
Eric & Stephanie Taylor
Thompson Real Estate & Build
Eric & Stephanie Toler
Edward Tracey
Aimee Weller
Mary & Hal Williamson
Jill Zignego



Rob & Kim Akey
Catherine Alexander
Scott & Jennifer Alexander
Trevor Allen
Adam Ambrosius
Jeff Anderson & Karen Nicoletti
Anonymous
Rebecca Ashcraft
Chuck Aude
Bake & Lee Baker
Sarah Barnes
Justin Barth
Madelyn Betz
Andrew Bickham
Diane & Herb Bingham
Becca Bouley
Julie Brown
Tom & Debbi Browning
Richard Bryan
Claire Cantalup
Brian & Brenda Carper
Timothy Clayton
Kathy Colucci
Compass Lexicon
Kirsten Core
Anne Couser
Meghan & Todd Cowart
Adam Credeur
Chris Crumal & Vicki Bernstein
Cooper Daniels
Michael & Alana Darling
Tony Dawson
Carly DeNeui
Rod DeVal
Clyde Dicks
Travis Diehl
DJenerate Supply Co
Nell Doyle
Dave & Terry Evans
Kelsey Evans
Lynn Exton
Kora Felsch
Louise Fisher & Chuck Martin

Margaret Forster
Dan Frankino
Virginia Gier
Andrew Gill
Bambi Goodman
Dianne & Larry Grove
Zoe Gutierrez
John & Julie Hankinson
Hannigan Family
Elisabeth Harry
Lynn Hartshorne
David & Gail Hazen
Karl & Carmen Henshaw
Jolene Hill
Virginia Hillhouse
Maggie Hoffman
Philip & Heidi Howeth
Birgit Huffman
James Hughes
Jay Hunston
Sandra Huskey
Barb & Ron Hvizzdak
Jerry & Marsha Ingraham
Leah Isaacs
Jared Jamison
Timothy Jarvey
William Jennings
Emily & KK Jense
Wayne & Yolande Johansen
Sheila & Jay Johnston
Christopher Jones
Hiram Jones
Elizabeth Kassebaum
Cory Keller
Robin Kelson
Susan Kemp
William Kleinsasser
Mari Knudsen
Peter Kopic
Jason Krane
Kent Laird
Elizabeth Larson
Joe Laszewski
RoseAnna Leary
LinkedIn
Live 2 Ski, LLC
Mary Lux
Rob & Allison MacCormick
Sarah MacCormick
Patrick Madigan
Marianne Madler
Loretta Magnowski
Christina Maloney
John & Anne Maloney
Sasha Marlatt
Peter & Lisa Marshall
Kristine Marvin
Mary McCarthy
Meghan McCranie
Lauren McDonald
Patricia McDonald
Talitha McGinnis
Erin McGowan
Kathryn McKay
Kathleen McMahon
& Robert Horne
Larry & Ruth Menter
Regina Mickie
Samuel Mirkovich
Theresa Mooney
Ernest Moore & Mo Cleary
Sabrina Morelli
Jill Morsberger
Christina Murray

Kathy Neff
Hannah Nelson
Lori Niebaum
Carla Novak
Haley Ohlrich
Lark Olson
Rolf Olsoy
Brooke Padron
Ryan Pannell
Jean Parodi
Julie & Eric Pastor
Tanessa Patterson
Deborah Pero
Steven Phillips
Nick Polumbus
Suzy Ralls
Ali Ramirez
Colleen Ratliff
Lori Rausser
Hayden Remington
Ronald Reuss
Bill Robertson
Faith Robinson
Leo & Amy Rosenthal
Alain Rothstein
Suzanne Royer-Long
Ashley Rubick
Ruck Family
Hudson Ruiz
Ali A. Saldarriaga
Sara Sarafa
Scapes LLC
Kelly Scarponi
Ben Schleicher
Brendan Schmidt
Mara Schradle
Andrea & Erik Schroeder
Sheila Shapiro
Cara Shepard
Jessica Skeie
Sally Stecher
Harlan Steele
Scott Steinmann
Chanelle Steinwand
Barbara & Marcel Storms
Ann Swanson
Chris Sweet
Audra Tasa
Luke Thies
Alison Thompson
Cameron Toler
Jesse Vatne
Mackenzie Vetter
Joel Vignere
Chad Walby
Chris Walsh
Shelter Wein
Randy & Susan Werner
JR Whaley
Mark Wheel
Madeline Williams
Amanda Wilson
Grace Wilson Donoghue
Jenny Windham
Mark Wrapp
James Young
Charles & Shaya Zucker

Bold print indicates supporters who have given every year for 5 years.

Every effort is made to correctly list and thank each supporter who allows us to make a public acknowledgement of their gifts to Whitefish Legacy Partners. If your name is missing or incorrect, we apologize for our error. Please contact us with corrections at (406) 862-3880 or email us at info@whitefishlegacy.org.



AGL Foundation
 Carol & Richard Atkinson
 Summerfield & Julie Baldrige
 Bill & Betsy Bayne
 Broussard Charitable Foundation
 Dick & Sandy Boyce
 Craig & Nancy Branigan
 Mark & Kirstin Buckland
 Wesley Campbell
 Castor Family
 Cinnabar Foundation
 Cross Charitable Foundation
 CSX Foundation
 Kate & Ross Dworman
 Michael & Michelle Episcopo
 Paul & Wendy Faganel
 Flathead Community Foundation
 James J & Joan A Gardner
 Family Foundation
 Hall-Halliburton Foundation
 The Hallowell Foundation
 High Stakes Foundation

Arden Hoffman
 Molly & Tobin Hoppes
 Tyler & Jessica Hoppes
 Mike & Lindsey Hromadka
 Melissa Hulvat & Pierre Kaptanian
 Mark Jungerman & Molly Miller
 Paul & Ann Jeremiasson
 Darrell & Allison Jones
 Fred & Sarah Jones
 Kiita Foundation -
 Jim & Jo-Ann Armstrong
 Doug & Carolyn Kohrs
 Krummholz Fund -
 Joe & Cindy Gregory
 Josh Lozman & Kristen Sramek
 Mark & Ashleigh Magill
 Paul & Janice McCann
 Shane McMillen & Sarah Canepa
 John & Alison Means
 Rhona Meislik
 Carol and Karl Moody
 Matt & Ellen Moran

Marcia Pade
 Than & Kristen Pulsifer
 Tom & Teresa Quinn
 Judy Ross & Jay Lanning
 Hank & Sue Ricklefs
 George & Kimberly Ruhana
 Schlinger Family Foundation
 Jon & Misty Scurlock
 Christine Stanley
 Dennis & Shane Steger
 Al & Lisa Stinson
 Garrett & Priscilla Turner
 James & Toni Turner
 Steven & Ardy Whisler
 Whitefish Community Foundation -
 Great Fish Community Challenge
 Whitefish Community Foundation -
 Nonprofit Excellence Award
 Rick & Sue Williams
 Randall & Kristin Zuckerman

Bold print indicates supporters who have given every year for 5 or more years.

IN MEMORY OF:

Britt Barone
 Katy Branston
 Sandra Conradi
 David Dixon
 Tyler Ellison
 Shane Foster
 Donald & Margaret Forster
 James Garbacz
 Nina Gardner
 Laurel Grady
 Eric Hosek
 James Howe
 Marilyn James
 Barbara Janni
 Ethan Johnson
 Kylie Kobrin
 Marsh Larimore
 Hank Mayfield
 Jerry Meislik
 Erik Myhran
 Lillian Nelson
 Rob O'Neil
 Ben Parsons
 Sam Penzi
 Kent Rauser
 Janey Rouse
 Peter Rudnicki
 Eric Schenck
 Don Spivey
 Peter Stanley
 Lynn Turpack
 Ivan Wolkind

Bold print indicates those who have trailhead or on trail recognition.



THE WHITEFISH TRAIL

Michael & Jay Bell
 Katelyn Dyson
 Goguen Family
 Charlie & Teresa Grenier
 Richard & Suzanne Hildner
 Kramer Family Fund
 Leonard & Carol Lewensohn
 Marina Tots Preschool
 Katherine & David Mayer
 Rhona & Jerry Meislik
 John Muhfeld
 Debbie & Tom Rivard
 Erik & Andrea Schroeder
 Robert & Margaret Stevens
 Stephanie Sunshine
 Ann Swanson
 Karen Van Howe
 Whitefish Legacy Partners

WHITEFISH LEGACY CENTER

Carol & Karl Moody

Bold print indicates those who have given multiple gifts to the WT Endowment.

LEAVE YOUR Legacy

The Whitefish Legacy Center Endowment Fund strengthens our community and ensures long-term sustainability. We are especially grateful to Carol and Karl Moody for their leadership in making the first gift in support of this effort.



Over the years, we have enjoyed many outings on the Whitefish Trail and have been excited to see the system improve and expand. WLP's recent acquisition of the Whitefish Legacy Center near Beaver Lakes creates exciting opportunities to build on an already outstanding network of recreational and educational experiences for our community.

With Montana's strong incentives for contributions to endowment funds, we contacted the Whitefish Community Foundation to help us maximize our impact. They shared that, unlike the Whitefish Trail, the new Whitefish Legacy Center didn't yet have an established endowment fund but would benefit from one. We were happy to provide the initial funding and hope the endowment will grow over time to support this wonderful community organization."

~ Carol & Karl Moody, Whitefish, MT





GREAT FiSH
community challenge

2025
Totals

WLP RAISED
\$186,227

WCF MATCH
\$17,000

INCENTIVE GRANTS
\$2,500

DONORS:
431
INCLUDING
40
NEW!



A7 Cycles
Kevin & Christine Abel
David & Ruth Ackroyd
AGL Foundation
Lin & Kathy Akey
Rob & Kim Akey
Amalgamated Sope Company, LLC
Ampersand Publishing Inc
Elise & Stefan Anderes
Katie & Paul Anderson
Chip & Kate Andrews
Angora Ridge Foundation
Anonymous
Shelly Arbuckle
Carrie & Jim Archibald
David Archibald
David Arnett
Gerald Askevold
Sam & Pete Avery
Michael & Kathleen Bailey
Summerfield & Julie Baldrige
Mike & Virginia Baldwin
Bank of America Charitable Foundation
Tom & Louise Bannigan
Roger Barber & Mary VanBuskirk
Mike & Kristi Barham
Frank & Naomi Barnes
Steve Barrett
Roger & Beth Barth
Bill & Betsy Bayne
Steffen & Kristine Beach
Randall & Rayne Beach
Mary & Ronald Behrendt
Behron LLC
Amanda Belleville & Brady Lockhart
Carla Belski
Benevity Community Impact Fund
MaiBritt & Joe Bennett
Jack & Nancy Biddle
Big Mountain Family Medicine
Ibrahim & Martha Bisharat
Robert & JoBeth Blair
Ed Blair & Kelly Ingham
Cameron Blake & Sandy Gray
Ellen & Brad Blickhan
Sam Boardman & Jess Cerra
Dane & Melanie Boat
Noah & Erin Bodman
Melinda Booth
Katie Boyd
Gretchen & Matt Boyer
Scott & Barb Brant
Becky & Doug Briber
Mark & Carissa Brown
Larry & Molly Bruce
Mark & Kirstin Buckland
Bulldog Saloon & Grill
Christine Burgess & John Prater
Paul Burton
Sara & Ryan Busse
Jean & Peter Butcher
Geoff & Lisa Calaway
Jamie & Christine Carbo
Pat & Missy Carlross
Sue & Jim Carstens
Helen & Larry Cates
Susan & Keith Causey
Emilie Chaplow
Linda Chauner
Ken & Mary Jane Clarkson
Gail Cleveland & Bruce Tannehill
Kim & Patti Codiga
Connie Cohen
Ellie Johnson & Paul Conrad
Diane Conradi
Kevin Corbett
Karen & Sam Cordi
Kim Corette
Betsy & Woody Cox
Wendy Coyne
Karl & Kathy Cozad
Scott Crandell & Deb Steig
Kim Crawford
Carol Cunningham & Thomas Feller
Katherine Curtis
Mark Davis & Mary Curtis
Lesley & Cliff Dales
Gary & Annell Danczyk
Matt & Kate Daniels

Scott & Kelly Davidson
Alan & Frances Davis
Jimmy & Michaelan DeHerrera
Ryder & Naomi Delaloye
Sandy Dillon
Dave & Frances Dittman
Mark & Lynnette Donaldson
Rick & Kristy Dooling
Nell Doyle
Josh & Ginger Duchesne
Shawn Watts & Bernadette Duperron
Lauren & Brittan Ellingson
Henry Elsen & Andress Larose
Felicia Ennis
Bart & Carole Erickson
John & Marianne Evenhuis
Dan & Ann Fagre
Nicole Fairclough
John Feldt
Greg & Sandy Ferrian
First Interstate BancSystem Foundation
David & Abby Fitch
Rhonda & Mike Fitzgerald
Quinn Fitzpatrick
Donald & Joann Fleming
Peter Francisco
Scott Freeman
Brandon & Katie French
Ryan Friel
Hal Frutiger & Debbie Rossetto
Kris & Laurie Fuehrer
Daniel Gagen & Paul Chartrand
Bob & Melissa Genovese
Timothy & Jolene Gibbs
Glacier Bank
Glacier Cyclery & Nordic
Peter Goedecke & Pam Ireland
Wanda Good
David Gordon
Miles & Jan Gordon
Richard Gordon & Cheryl Watkins
David Grady & Linda Engh-Grady
John & Sarah Graves
Frank & Jodi Gray
Doug & Katie Markus
Mary Taylor Greenup
Joe & Cindy Gregory
Jud & Lee Ann Groshong
Ryan & Beth Gunlikson
Jan Haller
Hannigan Family
Otto Hansen
Tom & Sue Harding
Bill Haring & Carol McSweeney
Greg Harms
Kristen Harrison
John Opatz & Laurie Hedger-Opatz
Maureen & Michael Hein
James & Catherine Heitel Foundation
Anne Herzog
Richard & Suzanne Hildner
Roderick & Doris Hines
Russ & Linda Hobbs
Stella & Willie Hobbs
Molly & Bill Hobgood
Arden Hoffman
Donna & John Holmstul
Holt Family
Michelle Hoover
Kendra Hope & Paul Sheehan
Tyler & Jessica Hoppes
Dusty Hosek
Trevor & Kacy Howard
Marisa & Matthew Hoyne
Mike & Lindsey Hromadka
Andy Hudak
David & Linda Hunt
Leslie & Will Hunt
Martha Hunt & Jim Finneran
Gary & Jill Hyer
Franz & Cynthia Ingelfinger
Ingredient Charitable Foundation
Michele Ireland
Pat & Bob Jepsen
Paul & Ann Jeremiassen
Claudine & Scott Johnson
Dr. Jon & Diane Johnson
Gordon Johnson
Hallie & Paul Johnson

Justin Johnston & Megan Chaisson
Jeffrey Jones
Sherry Jones & Jim Rogers
Mike Jopek & Pam Gerwe
John & Lisa Kalbfleisch
Greg & Connie Kasper
Sean & Kathryn Kelly
Steven & Melissa Kelly
Matt Kennedy
Hayley & Seth King
Claire & Burket Kniveton
Betsy & Daniel Kohnstamm
John Kramer
Katy & Joseph Krezowski
Norm & Mary Kuennen
John & Dana Lacey
Paul & Yvonne Lamb
Lamb & Co. Creative
The Landlord
Last Chair Kitchen & Bar
Brian Lavergne & Christine Tateson
Michael & Linda Lebeau
Erica & Todd Lengacher
Peg Lenon
Gail Leonard & Leo Keane
Leonard & Carol Lewensohn
Casey Lewis
Don & Sue Lewis
Bruce Lieftring & Brenda Winkler
Sue & Ed Lieser
Donna Liffers
Norma Linsky
William & Cathy Love
Ruth & Bret Luedke
Bill & Diane Lundgren
Duncan & Deb Lutes
Rob & Allison MacCormick
Sarah MacCormick
Gayle & Scotty MacLaren
Mark & Ashleigh Magill
Keith & Freda Malazdrewicz
Eric Malzone
Carol & Jim Marino
Kimberly & Eric Marland
Robert & Samara Marney
David Marx
Mastercard Data & Services
Debbie Maue
Amy & Eric May
Joanne McArthur
Paul & Janice McCann
Babby McCartney
Sierra McCartney & Brett Svetlik
Christine McKenney
Kathleen McMahon & Robert Horne
Mike Meador
Rhona Meislik
Emily & Manuel Mendoza
Richard Menicke & Jen Asebrook
Chris Merriman
Jan & Pete Metzmaker
Mary Anne Miles
Laurie & Martin Miller
Necile Miller
Regina Miller
Jean & Ron Miller
Zach Miller
Terri & Randi Minchew
Mindful Designs
Don & Terri Montgomery
Jamie & Shawna Moore
Devvi Morgan
Jeff & Amy Mow
Harlan Mumma & Nancy Hyde
Bob & Terri Muraoka
Patrick Muri
Tim & Joyce Murphy
Roberta Myers & Larry Davis
Sam & Ruth Neff
David Nickelson
Donald Nisewanger
Ed & Sherri Nissen
Robert & Elizabeth Norheim
Bill & Laurie O'Leary
Marcia O'Neil
Eric & Anne Oehlerich
Old Montana Building Company
Jessie Opel
Alexis & Grant Ordelheide

Bold print indicates supporters who have given every year for 5 years.

Every effort is made to correctly list and thank each supporter who allows us to make a public acknowledgement of their gifts to Whitefish Legacy Partners. If your name is missing or incorrect, we apologize for our error. Please contact us with corrections at (406) 862-3880 or email us at info@whitefishlegacy.org.

Richard & Valli Ostrem
Margaret Parodi
Alyssa & Andrew Parsons
 Larry & Valerie Parsons
Drew Paslawsky & Kim Sands
Bryan & Danielle Pearce
 Fred Pearce
Joel Pemberton
Joel Welle & Megan Pepe
Carl & Kelsey Perkins
Karen Perser & Sydney Lillard
 Nancy & Christian Persons
Regan Peschel
 Caroline Peters
Doug & Carolyn Pitman
 Charles & Rachel Potter
Dow Powell & Becky Smith-Powell
 Whitney Pratt & Jedd Sankar-Gorton
Quinn Family
Joe & Beverly Raudabaugh
 RE/MAX Of Whitefish
 Tighe & Jennifer Reardon
Dr. Kelly Redfield & Dr. Daniel Zlogar
Vicki Reich
John Repke
Doug Rhodes & Marie Le Moynes
 Jared & Elizabeth Richardson
Sue Robison
 Judy Ross & Jay Lanning
Roger Rowles & Valerie Konnerup
Stacy Rudnicki
 Lee Rumaner
 John & Cindy Ruth
William & Bev Ryan
DiAnne & Peter Sabin
 Erin Sabin
 Kirsten & Reid Sabin
 Tyler Hope & Chris Saeger
Tim & Deborah Salt
 Nick & Heather Satovick
Camisha Sawtelle
Don & Colleen Scharfe
 Shelli Mavor
Beth Schecher
Louis Schmidt
 Rachel Schmidt
 Eric Schmidt & Deven Robinson
 Larry & Kathy Schnuck
 Schott Family
 Charlie & Nancy Schuber
 Robert & Brianna Schuttler
Randy Schwickert & Donna Taylor
Toby Scott
Jon & Misty Scurlock
Melissa Segil & Alex Jopek
 Ryan & Wendy Seguire
 Steve & Jane Sekelsky
Tim & Hilary Shaw
 Jamie & Janna Shennan
Susan Sherman
Dan & Kim Short
 Lara & Peter Shortall
Jane & George Shryock
 Jennifer Sidor
Roger & Luann Sievers
Connie & Paul Silverman
 Don Simpson
 George & Shannon Slessman
 Bob & Michelle Small
 Anne & Justin Smith
 Mark & Jenny Smith
Will & Bonnie Smith
 Mark & Laura Snider

Joseph & Deanne Sramek
Christine Stanley
Lester & Kristin Stanley
Peter & Elaine Steele
Don & Linda Stolte
 David Streeter
 Stumptown Vacation Rentals
 Colleen Sullivan
 Stephanie Sunshine
Mark & Nancy Svennungsen
 William Swann & Kellie Knox
 Ann Swanson
 Frank Sweeney
 Jordan Sweeney
 Sweet Peaks Ice Cream
 Jeanne Tallman
 Tamarack Foundation, Inc
Kent & Kim Taylor
Roy & Debbie Teal
 The Bear Stone Fund
 Genevieve Thomas
 Dana Thompson & Jud Alden
Somer Treat
 Hal Trost & Lynn Rochard
David & Jeannine Trousdale
 Kyle & Jessica Tubbs
 Nathan Tuebner
Keith & Holly Turley
 Daniel Tutko
 Rick & Jan Ulvin
Wendy Umphrey
 Justin van Emmerik
Heidi & Mark Van Everen
 Kristin Van Eversen
 Eleanor Vanderhorst
Darrel & Elizabeth Vankoten
 Sarah & Jordan Vaughan
 Bill Vetter
Michael & Heather Vrentas
Ben & Katie Ward
Jerry Washington
Helen Weems & Joel Christiansen
 Luca Welle
 Mary Jane Westermarck
 Matt & Brandy Wetzler
 Wheaton's Cycle
Steven & Ardyce Whisler
William & Karen Whitby
 Whitefish Chiropractic Center
Whitefish Community Foundation
Whitefish Mountain Resort
Lawrence & Cindy Whittington
Amy & Tim Williams
Becky & Larry Williams
Rick & Sue Williams
 Brenda Wilmore
 Wyatt & Poppy Wilson
 Grace Wilson Donoghue
Doug & Bet B. Wise
Jeimi Woffinden
 Stephen & Jennifer Wogen
 Trisha Wolf
 Nancy Woodruff & Steve Thompson
John & Lorrie Woods
 Workday
 Daniel Wright & Charlotte Lubert
 Kristin Yandora & John Amick
Alison Young
 Tom & Susan Zakos
 Zalvin Family
The ZaneRay Group
 Lee Zimmerman
Randall & Kristin Zuckerman

CORPORATE SPONSORS & SUPPORTERS

FOUNDING SPONSORS

Buffalo Cafe
Glacier Bank
Glacier Cyclery & Nordic
Nelson's Ace Hardware
 SWCA Environmental Consultants
 Sportsman & Ski Haus
 Third Street Market

CORPORATE SPONSORS

Abruzzo Italian Kitchen
Applied Materials
 Bonsai Brewery
Buffalo Cafe
Bulldog Saloon & Grill
DeITex Capital
Glacier Cyclery & Nordic
Hidden Moose Lodge
Hurray! Balm
Kandahar Lodge
 Kemo Sabe
Mindful Designs
 Montana Coffee Traders
Northwest Imaging
Old Montana Building Co.
 Sportsman & Ski Haus
 Stumptown Vacation Rentals
Sweet Peaks Ice Cream
 Tamarack Cannabis
Wasabi Sushi Bar & Ginger Grill
 Whitefish Chiropractic Center
Whitefish Lake Restaurant
Whitefish Mountain Resort
Whitefish Riverfront Hotel

TITLE EVENT SPONSORS

First Interstate Bank
 Flathead Running Company

MAJOR EVENT SPONSORS

Alaska Airlines
BNSF Railway Foundation
Great Northern Bar & Grill
 Jeremiah Johnson Brewing Company
Logan Health Whitefish
 OrthoRehab Physical Therapy
 Streidle Krueger Farm, LLC
The Firebrand Hoteal
The Lodge at Whitefish Lake
Whitefish Convention & Visitors Bureau

EVENT SPONSORS

101 Central - Herb & Omni
 Athletic Brewing Company
 Backslope Brewery
 Blackstar
Blue Cross Blue Shield of MT
 Edward Jones - Joel Pemberton
First Interstate Bank Volunteers
Flathead Beacon Foundation
Glacier Cyclery & Nordic
Glacier Restaurant Group
Great Northern Cycle & Ski
 Heitmann Productions
 IV Element
 Jersey Boys Pizza
Kandahar Lodge
 Katherine Hayes Media
 Legacy Bike Park
 Mackenzie River Pizza
 Malmquist Construction
 Mindful Designs
Montana Coffee Traders
National Parks Realty
 Parkside Credit Union
 Pursuit Glacier
 REI
 Runner Up Sports
Sportsman & Ski Haus
 Stumptown Snowboards
Sweet Peaks Ice Cream
 Uptown Hearth
 Tamarack Cannabis
 Whitefish Outfitters & Tours
Whitefish Mountain Resort
 Vibrant Routs

ADOPT-A-TRAIL SPONSORS

Castor Family
Center for Native Plants
 Clydesdale Outpost
 Cressley Todt Coon Family
Forestation
Friends of Elkhorn HOA
Great Northern Cycle & Ski
Great Northern Homes
Kalpakis Family
Richardson Family
Stack Financial Management/
InvesTech Research
Stallings Family
Whitefish Animal Hospital

ADOPT-A-TRAIL CREWS

Applied Materials
 Averill Hospitality
Center for Native Plants
 Church of the Cross
Flathead Area Mountain Bikers
Forestation
Grouse Mountain Estates
 Grouse Mountain Lodge
 Logan Health Whitefish
NW Montana Backcountry Horsemen
 Parkside Credit Union
RE/MAX Whitefish
Scharfe Family & Friends
 Spotted Bear Spirits
Stack Financial Management/
InvesTech Research
 Summits and Shenanigans
 Two Bear Air
 Trailhead Counseling Center
Whitefish Mountain Resort

TRAIL VOLUNTEERS

Bill Love
 HeartStone Advisors
Windermere Real Estate

TRAIL SPONSORS

Center for Native Plants
City of Whitefish
 Craggy Earth
Forestation
 Glacier Aquascapes
Greenscapes LLC
 Treeline Creative
 USDA, Forest Service, Flathead National Forest
 Challenge Cost Share
Working Women of Whitefish

GRANTS

Applied Materials Foundation
Blue Cross Blue Shield of MT
 DNRC Conservation Education Grant
 Flathead Conservation District
 Flathead Electric Cooperative - Round Up for Safety
 Flathead National Forest -
 Resource Advisory Committee (RAC)
 Interagency Grizzly Bear Committee
 Iron Horse Foundation
 Logan Health Foundation
 Montana Community Bear Conflict
 Prevention Fund (Heart of the Rockies,
 Montana Fish, Wildlife & Parks,
 and National Fish & Wildlife Foundation)
MT Recreational Trails Program
MT Stewardship Grant Program
 Montana State Fund Assisting
 Charitable Endeavors (ACE) Grant
 Soroptimist International Whitefish
Whitefish Community Foundation -
Community Grant
Whitefish Community Foundation -
Great Fish Community Challenge
 Weyerhaeuser Giving Fund

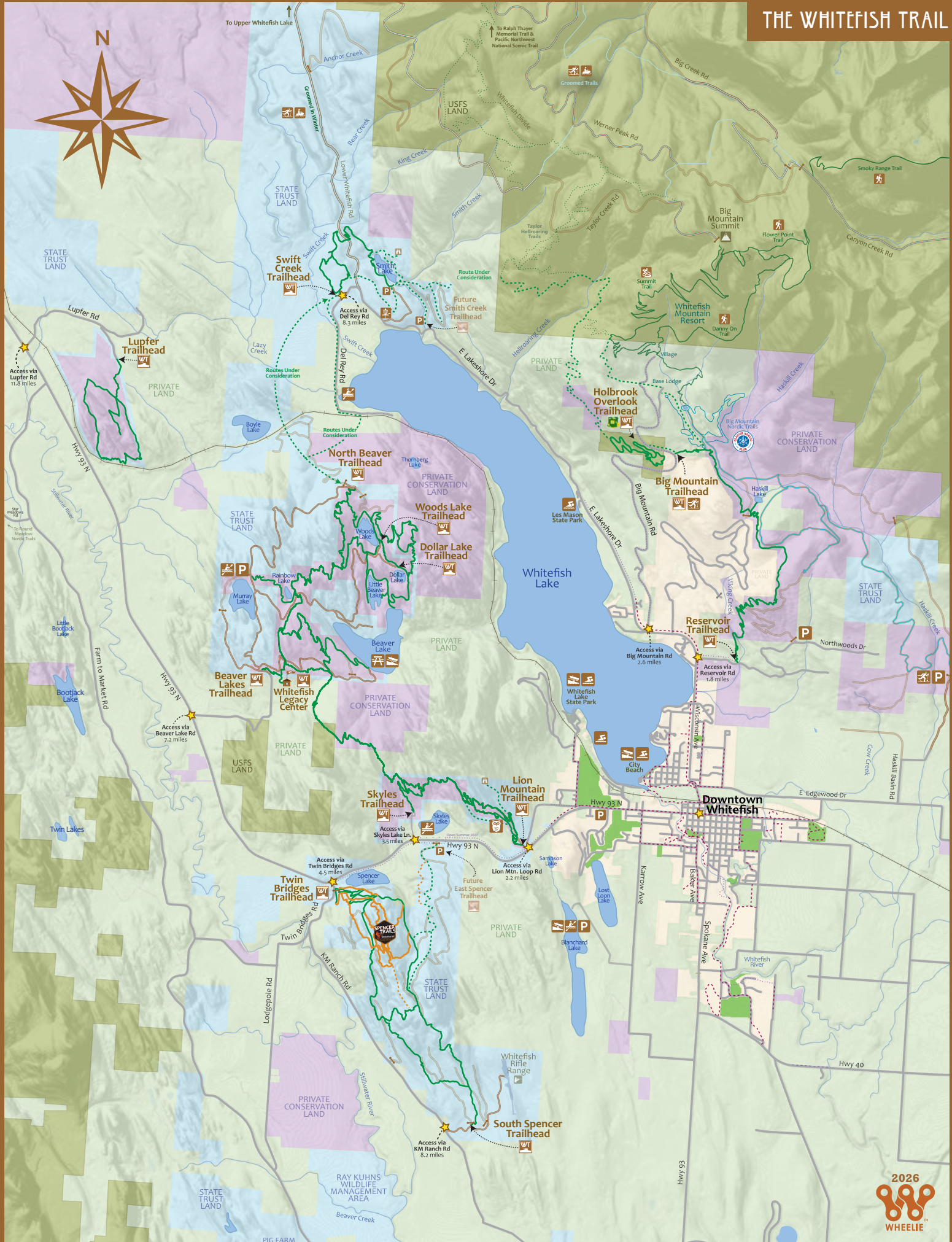
FOUNDATIONS

American Bank Foundation
Applied Materials Foundation
Bristol-Meyers Squibb Foundation
Flathead Beacon Foundation
First Interstate BancSystem Foundation
Kiita Foundation
 Robert A Waller Foundation

Thank You TO OUR
LEGACY SPONSORS



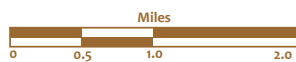
Legacy Sponsors have pledged \$50,000 over five years to support Whitefish Legacy Partners and the Whitefish Trail. Their long-term investment will leave a lasting legacy for the Whitefish Community.





Legend

- | | | | |
|--|----------------------------------|--|-------------------|
| | The Whitefish Trail & Trailheads | | State Lands |
| | Proposed Whitefish Trail | | USFS Land |
| | Spencer Freeride Trails | | City Parks |
| | Groomed Nordic Trails | | City Limits |
| | Community Trails | | Private Land |
| | Future Community Trails | | Conservation Land |
| | Distance From Downtown | | |
| | Existing Paths | | |
| | Proposed Paths | | |
| | Groomed Trails | | |



OUR PARTNERS





PO Box 1895
 Whitefish, MT 59937
www.whitefishlegacy.org

BOARD OF DIRECTORS

- Reid Sabin, *Chair*
- Somer Treat, *Vice Chair*
- Julie Baldrige, *Treasurer*
- Rachel Schmidt, *Secretary*
- Diane Conradi, *Co-founder, ex officio*
- Leslie Hunt, *Past Chair*
- Mike Jopek, *Past Chair*
- Marissa Keenan
- Mike Meador
- Nick Polumbus
- Jared Richardson
- Erin Sabin
- Eric Schmidt
- Becky Smith-Powell

WLP STAFF

- Heidi Van Everen, *Executive Director*
- Cynthia Ingelfinger, *Director of Development*
- Jedd Sankar-Gorton, *Program Director*
- Haley King, *Director of Outdoor Education*
- Nathan Tuebner, *Program Manager*
- Sarah MacCormick, *Trail Coordinator*

525 Railway Street, Suite 206
 855 Beaver Lake Road
 PO Box 1895
 Whitefish, MT 59937
 406.862.3880 | info@whitefishlegacy.org
www.whitefishlegacy.org



Help us maintain an accurate mailing list by letting us know of changes to your address. Email info@whitefishlegacy.org with corrections.

WE ARE IMMENSELY GRATEFUL FOR OUR 2025 PARTNERS AND COLLABORATORS:

City of Whitefish • Department of Natural Resources & Conservation • Flathead Area Mountain Bikers
 Flathead National Forest • Glacier Nordic Club
 Forestration • Land Water Law • MT Fish, Wildlife & Parks
 WLP Event, Education & Trail Volunteers



WHITEFISH
 LEGACY CENTER

**OPENING
 JULY 2026!**

Give Back & DONATE

Whitefish Legacy Partners relies on the generosity of trail users, conservation-minded supporters, and local businesses. Your donation is an investment in the future of our community. Enjoy the Whitefish Trail, visit the Whitefish Legacy Center, be a conservation champion—and Give Back and Donate today!



SCAN
 CODE
 to make your
 2026 donation

